



# Phillips HUE Play Light Bar - Custom Mount



Vision Forge Creations

[VIEW IN BROWSER](#)

updated 6. 1. 2024 | published 6. 1. 2024

## Summary

Corner/wall mount for Philips HUE Play Light Bar transforms it into a stylish spotlight.

[Household](#) > [Home Decor](#)

Tags: [wall](#) [light](#) [mount](#) [bar](#) [philips](#) [hue](#) [play](#)  
[philipshueplay](#) [philipshueplaylightbar](#)

Custom mount for seamlessly integrating the Philips Hue Play Light Bar into your space as a stylish wall spotlight, effortlessly tethered to the wooden struts in the ceiling.

### Required Materials:

- 2x Screws: M3 10mm (DIN 965)
  - 1x Screw for securing the HUE Play Light Bar
  - 1x Screw for connecting the printed pieces together
- 1x Nut: M3 (DIN 934)
- 1x Wood Screw 4x20mm (or equivalent)

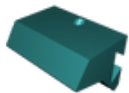
### Installation Steps:

1. Begin by attaching the Philips Hue Play Light Bar to the Hue Mount using an M3 10mm Screw.

2. Insert an M3 nut into the Wall Mount.
3. Secure the Wall Mount to the desired location using a Wood Screw (4x20mm or equivalent).
4. Slide the Hue Mount onto the Wall Mount.
5. Connect the printed pieces using the last M3 screw, use a long, thin screwdriver.

This custom mounting solution ensures a sleek and functional integration of the Philips Hue Play Light Bar, casting light where you need it with a touch of modern flair.

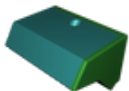
## Model files



hue-mount.3mf



wall-mount.3mf



philips-hue-play-light-bar-mount-1-mk2-v11-whole-mount.3mf

## License ©

This work is licensed under a  
[Creative Commons \(4.0 International License\)](https://creativecommons.org/licenses/by-nc-sa/4.0/)



**Attribution—Noncommercial—Share Alike**

- ✗ | Sharing without ATTRIBUTION
- ✓ | Remix Culture allowed
- ✗ | Commercial Use
- ✗ | Free Cultural Works
- ✗ | Meets Open Definition

