

## Shelf / drawer / door adapter for smartphone



Smoluch

[VIEW IN BROWSER](#)

updated 9. 1. 2024 | published 9. 1. 2024

### Summary

Instead of using tripod attach your smartphone to any vertical or horizontal board 18-20 mm thick.



1.42 hrs



1 pcs



0.20 mm



0.40 mm



PLA



10 g



Crealty  
Ender 5 Pro

[Gadgets](#) > [Photo & Video](#)

Tags: [holder](#) [tripod](#) [phonemount](#)

I often shoot videos at home and using tripod is not always quick/ convenient. When I shoot some review I need my phone above me so I thought about mounting it to the bottom board of an open cabinet.

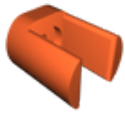
You need my printed adapter, a tripod screw and a tripod smartphone adapter. This is for typical 1/4" tripod bolts.

And as you can see you can attach it to cabinet doors, table, ladder step - whatever is around 2 cm thick.

Any filament will do, 20% infill is more than enough.

If you like my designs do not hesitate to visit my YT channel :) -  
[@taboretum](#)

## Model files



**shelf\_tripod\_mount.stl**

## Print files



**part\_a\_1h25m\_020mm\_205c\_pla\_ender5.gcode**

PLA 0.40 mm 0.20 mm 1.42 hrs 10 g

## License ©

This work is licensed under a  
[Creative Commons \(4.0 International License\)](#)



**Attribution-NonCommercial**

- 
- ✗ | Sharing without ATTRIBUTION
  - ✓ | Remix Culture allowed
  - ✗ | Commercial Use
  - ✗ | Free Cultural Works
  - ✗ | Meets Open Definition