

aquila s2 5015 fan upgrade



Chase Wagner

[VIEW IN BROWSER](#)

updated 6. 1. 2024 | published 6. 1. 2024

Summary

upgrades aquila s2 fan to 5015



2.44 hrs



1 pcs



0.30 mm



0.40 mm



PLA



5 g



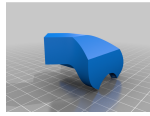
Anycubic
Kobra 2

[3D Printers](#) > [Other Printer Parts & Upgrades](#)

Tags: [upgrade](#) [aquila](#) [aquilas2](#)

in the sliced version it has no lever which would be preferred so that you can use the original arm for the hotend (I think, I have not tried it, I broke the 3d printed arm that took the pieces from the original so I bought a metal ender3 hotend and that works for me.) Would recommend having another 3d printer handy though.

This remix is based on



Voxelab Aquila S2 K3D print head

by Sorkin

Model files



aquila-upgrade-4.stl

Print files



aquila-upgrade-3.gcode

PLA 0.40 mm 0.30 mm 2.44 hrs 5 g

License

This work is licensed under a
[Creative Commons \(4.0 International License\)](#)



Attribution-ShareAlike

-
- ✗ | Sharing without ATTRIBUTION
 - ✓ | Remix Culture allowed
 - ✓ | Commercial Use
 - ✓ | Free Cultural Works
 - ✓ | Meets Open Definition