

Neptune 3 Pro/ Plus/Max Extruder Handle



Joseph Capriola

[VIEW IN BROWSER](#)

updated 6. 1. 2024 | published 6. 1. 2024

Summary

Replacement extruder handle/lever for the N3 Pro Plus Max.

[3D Printers](#) > [Other Printer Parts & Upgrades](#)

Tags: [elegoo](#) [elegooneptune3pro](#) [elegooneptune3plus](#)

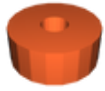
Printed with PLA+ at 0.12mm layer height, 0.4mm nozzle, and 100% infill. Used tree supports. Printed test piece of the 3mm holes first, to ensure proper part fit.

Converted elegoo .stp file to .stl from open source models.

Model files

extruder_handle-1.stl





hole-test.stl

License ©

This work is licensed under a
Creative Commons (International License)



Public Domain

- ✓ | Sharing without ATTRIBUTION
- ✓ | Remix Culture allowed
- ✓ | Commercial Use
- ✓ | Free Cultural Works
- ✓ | Meets Open Definition