



Olight RN400 top mount



philon

[VIEW IN BROWSER](#)

updated 6. 1. 2024 | published 6. 1. 2024

Summary

Top mount for Olight RN400 bike lamp

[Sports & Outdoor](#) > [Outdoor Sports](#)

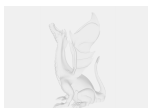
Tags: [bike](#) [step](#) [olight](#) [cc0](#)

Top mount for Olight RN400 bike lamp. Uses the original plastic part but puts it on the top of the light instead of the bottom. Allows for mounting below handle bar and still using the “anti glare” lens feature.

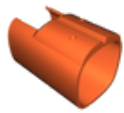
Hardware needed:

- 2x short M2 screw. I'm not sure how long they can be, I used a longer one cut to size.
- 2x M2 nut

Model files



rn400_top_mount_v10.step



rn400_top_mount_v10.stl

License ©

This work is licensed under a
[Creative Commons \(International License\)](#)



Public Domain

- ✓ | Sharing without ATTRIBUTION
- ✓ | Remix Culture allowed
- ✓ | Commercial Use
- ✓ | Free Cultural Works
- ✓ | Meets Open Definition