

Nail Polish Presentation Shelf Rack/Stand (modular)



moWerk

[VIEW IN BROWSER](#)

updated 23. 1. 2024 | published 23. 1. 2024

Summary

Don't hide your nail polish bottles! This modular shelf presents them on 3 levels and makes them easily accessible.

[Household](#) > [Bathroom](#)

Tags: [shelf](#) [stand](#) [rack](#) [cosmetics](#) [nailpolish](#) [cosmetic](#)
[nailpolishholder](#)

Having been commanded by my wife to organize the nail polish, I assessed the available options but found the designs to be neither simple nor functional enough.

My goal is to display all nail polish bottles fully, avoiding them hiding behind each other as often seen in existing designs.

The presentation shelf comprises at least three parts:

The two side pieces:

- Two versions are currently available – one with a flat back to fit against a wall and another with a 2cm x 6cm cutout to accommodate frames or steps.

- A third version, which is wall-mounted, is in progress and will be posted soon.

One or more of below rack modules currently available:

Quintuple 28mm width, 140mm rack module with 28mm depth:

- Each level can hold five regular 2.8cm bottles, accommodating 15 per 14cm rack.

NEW Quadruple 34mm width, 136mm rack module with cut out for 34mm depth:

- Each level can hold four 3.4cm bottles, accommodating 12 per 13.6cm rack.

NEW Double 34mm width, 68mm rack module with cut out for 34mm depth:

- Each level can hold two 3.4cm bottles, accommodating 6 per 13.6cm rack.

Double 28mm width, 56mm rack module, 28mm standard depth:

- Designed for six 28mm bottles, either to extend a 14cm rack or to create a color variation using only 56mm modules in different colors.

Single 34mm width, 34mm spaced depth:

- Suitable for three round bottles similar to those shown in the photos.

Assembly instructions

- The rack parts feature two keyed joint lashes on each side for connecting racks using the provided joint keys.



- These joints can be reinforced with screws, utilizing the rack connector piece (grey in below picture)
- Use these connector pieces to link newly added racks to the initially released 14cm version that lacks keyed joint lashes.



- The sides are connected using screws.
- Combine the modules as desired, with plans for additional modules to accommodate accessories or more irregular bottle shapes.

General Notes:

- Complete cooling down before removal from the print bed is crucial.
- A cautionary note about a title page print error that led to warped sides due to impatience during cooling.
- It is advisable to add a brim to the rack pieces or take other appropriate measure to prevent warping. The test prints in the title pictures reveal that warping may occur, causing gaps between visible parts.
- Another note on the test print in the title pictures, the rack consists of two different matte white PLAs, a result of not comparing colors before swapping – a tale involving alcohol.

Revision history

- 20240123 Added quadruple and double 34mm racks.
- 20240110 Added single width 34mm, Added keyed joint connectors and cut outs to build long shelves by connecting modules.

Model files



nail-polish-rack-140mm-for-15x-28mm-bottles.stl



nail-polish-rack-136mm-for-12x-34mm-bottles.stl



nail-polish-rack-68mm-for-6x-34mm-bottles.stl



nail-polish-rack-56mm-for-6x-28mm-bottles.stl



nail-polish-rack-34mm-for-3x-34mm-bottles.stl



nail-polish-rack-right-side-full.stl



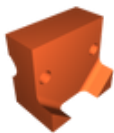
nail-polish-rack-left-side-full.stl



nail-polish-rack-right-side-2cmx6cm-step-cutout.stl



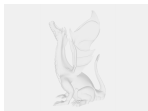
nail-polish-rack-left-side-2cmx6cm-step-cutout.stl



nail-polish-rack-screwed-connector.stl



nail-polish-rack-joint-key.stl



nail-polish-rack-master.blend

License ©

This work is licensed under a
[Creative Commons \(4.0 International License\)](https://creativecommons.org/licenses/by-nc-sa/4.0/)



Attribution—Noncommercial—Share Alike

- ✗ | Sharing without ATTRIBUTION
- ✓ | Remix Culture allowed

- ✖ | Commercial Use
- ✖ | Free Cultural Works
- ✖ | Meets Open Definition