



Elegoo Mars 4 Ultra Resin Printer Cover Riser

4 4cmclean

[VIEW IN BROWSER](#)

updated 7. 1. 2024 | published 7. 1. 2024

Summary

The Riser provides a way to have a power cable enter the chamber without the need to drill any holes in the cover

[3D Printers](#) > [Other Printer Parts & Upgrades](#)

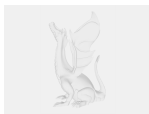
Tags: [heater](#) [resin](#) [resinprinter](#) [mars4](#) [mars4ultra](#)

The Riser provides a method to add a small power cable (12v or 24v etc) for an internal optional heater, that can be added to the Elegoo Mars 4 Ultra Resin printer. The Riser removes the need to drill an access point into the printers cover, therefore no modifications to the printer or cover is necessary. It is printed in 3 parts and this is due to its nature and over hangs and i found no other way to print the unit as a single print unfortunately. I did try 6 other methods but the results were less then ideal. I have supplied the Bambu Studio 3mf file and 3 STP files for other slicers. Included is a PDF with illustrations on how to put the 3 parts together. I tried hot glue but that was messy and found using Super glue with a small nozzle worked best and gave more control of glue application. The unit when fitting to the printer is very snug and when installing, a click on the 4th corner should be heard as it homes into place. A bit of pressure will be required homing in on the 4th corner when installing. IDK if this fits reg Mars 4 Resin printer as i don't have one to test. The fit of the printers

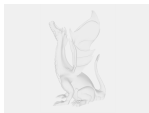
cover on the Riser, should be no tighter or looser o a fit, then when used without the Riser.

NOTE..I have a designed a heater bracket for an off the shelf heater for this printer and have not included it here, as users may choose to use a different heater module and use a different method to heat with, but the Riser will still give them an avenue to get a low power cable into the printer. I will post that bracket and its necessary accessories as a different post!

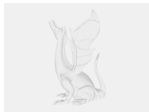
Model files



resin-heater-lid-raiser-mars-4-ultra.3mf



resin-heater-lid-riser-mars-4-ultra-rim-spacer.stp

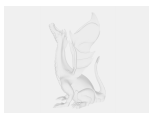


resin-heater-lid-riser-mars-4-ultra-base.stp



resin-heater-lid-riser-mars-4-ultra-rim.stp

Other files



resin-heater-mars-4-ultra-lid-riser.pdf

License ©

This work is licensed under a
[Creative Commons \(4.0 International License\)](#)



Attribution—Noncommercial—Share Alike

- ✗ | Sharing without ATTRIBUTION
- ✓ | Remix Culture allowed
- ✗ | Commercial Use
- ✗ | Free Cultural Works
- ✗ | Meets Open Definition