



Mars 4 Ultra Resin Printer Heater Bracket with Antenna Mounting

4 4cmclean

[VIEW IN BROWSER](#)

updated 7. 1. 2024 | published 7. 1. 2024

Summary

Mars 4 Ultra Resin Printer Heater Bracket

[3D Printers](#) > [Other Printer Parts & Upgrades](#)

Tags: [heater](#) [bracket](#) [antenna](#) [resin](#) [resinprinter](#)
[mars4ultra](#) [heaterbracket](#)

A heater mounting bracket for the Elegoo Mars 4 Ultra Resin printer using a specific off the shelf 12v 5 amp heater unit.

https://www.amazon.com/dp/B0BL6WZPM9?psc=1&ref=ppx_yo2ov_dt_b_product_details

https://www.amazon.com/dp/B0CMQ8GPY7?psc=1&ref=ppx_yo2ov_dt_b_product_details

The unit ships with a Heater, 12v 5amp PSU and power cables

The bracket is a one part print file that is simply hot glued at the base and on the side tab that rests against the printer Z frame. The Heater firmly press fits into the bracket.

To prevent drilling holes into your printer for power cables for the heater, use the Riser i created

<https://www.printables.com/model/710358-elegoo-mars-4-ultra-resin-printer-cover-riser>

As the Mars 4 Ultra Resin printer uses a Carbon Filter on the left hand side and there is an antenna for wifi on the right hand side, space is limited, therefor this bracket accommodates the fitting of the heater and provides an antenna tab for the existing antenna to be shifted up too.

You will need an antenna pigtail cable (DO NOT USE RP SMA cable) see images for correct sex compatible cables.

SMA Female Bulkhead Mount to SMA Male RG316 Antenna Extension Cable 6 inch

https://www.amazon.com/dp/B081BHHPHQ?ref=ppx_yo2ov_dt_b_product_details&th=1

NOTE:....

1. Use Hot glue to adhere the bracket as other glues will be difficult to remove if that need arises.
2. If you hot glue the bracket facing directly forward, you will need to modify the supplied power cable, as the shipping cable will prevent the cover from going on and it is too stiff for bending. If bending the cable to force fit, it can break and you will still have issues fitting your cover.
3. There are 2 solutions to the power cable. Either fit your bracket at an angle, bend the cable to suit and where the cable will not obstruct the cover being fitted (or) Customize the power cable by cutting the yellow header plug off, getting to the soldered terminals of the plug, then cutting the terminals so they don't jut out and resoldering the wires back to the plug at 90 degrees to the plug. The supplied 3d printed Shroud (3 parts) is supplied for this option and is a cleaner option, but requires the user to have soldering experience and some epoxy or hot glue gun. It is required to add the 3 shroud parts onto the cable before resoldering. After resoldering, then apply hot glue/or epoxy into part 1 and quickly insert the soldered plug into Shroud part 1. After that fill Shroud part 2 with hot glue/epoxy and slip it into place. Repeat with Shroud part 3. (SEE IMAGES OF PLUGS ETC) The completed Shroud assembled will tightly hug the corner of the heater.
4. It is best to decide what method of install you want to utilize before installing the bracket. If you choose option 1 with angling the bracket, you will need/want to take the supplied STP file into your modeling app and amend the model so the side adhesive tab that adheres to

the Z vertical frame can match the angle you choose. (Note gluing only the bottom and not using the side tab, renders a flimsy mounted bracket) If you choose option 2 with custom cable, prepare your cable and shroud first, before adhering the bracket.

5. This bracket is not required for regular Mars 4 as there is no antenna to deal with!

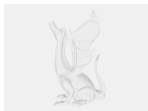
Model files



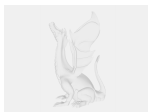
resin-heater-bracket-mars-4-ultra.3mf



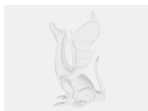
resin-heater-bracket-mars-4-ultra.stp



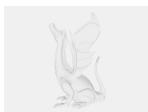
heater-power-plug-shroud-270-degree-angled-body.stp



heater-power-plug-shroud-270-degree-angled-body-2.stp



heater-power-plug-shroud-270-degree-angled-funnel.stp



heater-power-plug-shroud-mars-4-ultra.3mf

License

This work is licensed under a
Creative Commons (4.0 International License)



Attribution—Noncommercial—Share Alike

- ✗ | Sharing without ATTRIBUTION
- ✓ | Remix Culture allowed
- ✗ | Commercial Use
- ✗ | Free Cultural Works
- ✗ | Meets Open Definition