



## Larger Shelf for 8020 Rig



MLampe

[VIEW IN BROWSER](#)

updated 7. 1. 2024 | published 7. 1. 2024

### Summary

Remix to make shelf larger to fit my speakers on top of. Approximately 140mm length and width.

[Hobby & Makers](#) > [Other Ideas](#)

Tags: [shelf](#) [racing](#) [simracing](#) [sim](#) [8020](#) [aluminum](#)  
[aluminumextrusion](#) [aluminumprofile](#) [simrig](#)

Used M8 20mm Button Head Socket Screws

Print Settings:

Polylite Black PLA

.2mm layer height

15% Cubic infill

3 walls

Supports enabled

5 Top and bottom layers

Printed on Bambu P1S

# This remix is based on



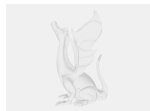
**Shelf for 8020 rig**

by Endboards

## Model files



**sim-shelf-large.3mf**



**sim-shelf-large.step**

## License ©

This work is licensed under a  
**Creative Commons (4.0 International License)**



**Attribution-NonCommercial**

- ✗ | Sharing without ATTRIBUTION
- ✓ | Remix Culture allowed
- ✗ | Commercial Use
- ✗ | Free Cultural Works
- ✗ | Meets Open Definition