



The Dinner Spinner - Remix (Australian Version)



YDesign

[VIEW IN BROWSER](#)

updated 7. 1. 2024 | published 7. 1. 2024

Summary

This is a remix of the popular Dinner Spinner from NC-Designs.

[Household](#) > [Other House Equipment](#)

This is a remix of the popular Dinner Spinner from NC-Designs. This remix adds in Australian tiles so you can spin your life away and never argue again about what is on the menu tonight. The original design can be found at the link below. If you like this design, please give the original design a visit and throw him a like.

<https://makerworld.com/en/models/86571#profileId-92813>

The following parts and tiles in this remix were originally created by NC-Design and I have included them for ease of download and printing:

- The Dinner Spinner Frame
- Fitment Test Piece
- Optional Backing
- Spinner
- Dominos
- McDonalds
- KFC
- Pizza Hut

If anyone is after extra tiles, shoot me a comment and I can add them as requested.

Assembly Instructions (from NC-Designs)

Each of the logos snap into place in the back of the dinner spinner. I recommend either:

- Printing all pieces except the logos, then one logo, and then scale the logo in $\sim 0.1\%$ increments until you get the fit you want. Then print the rest of the logos at the same scale.
- Printing the logos you want and then the fitment test piece. Depending on that fitment you can adjust the scale in $\sim 0.1\%$ increments until you get the fit you want. Then scale the dinner spinner, spinner, spinner axis, and optional backing plate the same amount.

There are spots for two 5mm x 2mm thick magnets (<https://a.co/d/8JerZ9a>) to be glued in each corner for putting it on the fridge. I ended up adding a third magnet to each corner that sticks out a little bit to make it more secure to the fridge.

There is also an optional backing plate that has a cut out for mounting to a wall if wanted.

Print Settings

- Layer height 0.2mm
- Wall Generator: Arachne
- Only one wall on top surfaces
- Wall Loops: 3
- Top Shell Layers: 4
- Bottom Shell Layers: 4
- Infill: 15%
- Infill Type: Gyroid
- No Brim

This remix is based on



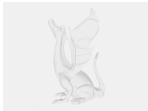
The Dinner Spinner (20+ Logos Included) by NC-Designs

Model files



3MF All Components

1 file



dinner-spinner-australian-version.3mf



Frame and Spinner

4 files



spinner_axis.stl



fitment-test-piece.stl



the_dinner_spinner.stl



optional_backing.stl



Take-Away Tiles

14 files



zambrero.stl



grilld.stl



hungry-jacks.stl



subway.stl



noodle-box.stl



nandos.stl



bettys-burgers.stl



dominos.stl



gyg.stl



red-rooster.stl



pizza-hut.stl



oporto.stl



kfc.stl



mcdonalds.stl



spinner.stl

License

This work is licensed under a
Creative Commons (4.0 International License)



Attribution—Noncommercial—Share Alike

- ✗ | Sharing without ATTRIBUTION
- ✓ | Remix Culture allowed
- ✗ | Commercial Use
- ✗ | Free Cultural Works
- ✗ | Meets Open Definition