

# Suction Cup/ Magnetic Dry Erase Shelf



samwiseg0

[VIEW IN BROWSER](#)

updated 27. 9. 2023 | published 27. 9. 2023

## Summary

This design is mostly for glass whiteboards that utilizes suction cups to keep it in place! Magnet version included!

[Household](#) > [Office](#)

Tags: [shelf](#) [marker](#) [magnet](#) [magnets](#) [magnetic](#) [dry](#)  
[eraser](#) [fridgemagnet](#) [whiteboard](#) [dryerase](#) [suctioncup](#)  
[fridgemagnets](#) [whiteboardorganizer](#) [eraserholder](#)

This is a simple design mostly for glass whiteboards that utilizes suction cups to keep it in place.

Print with the back side facing down at a 45° angle.

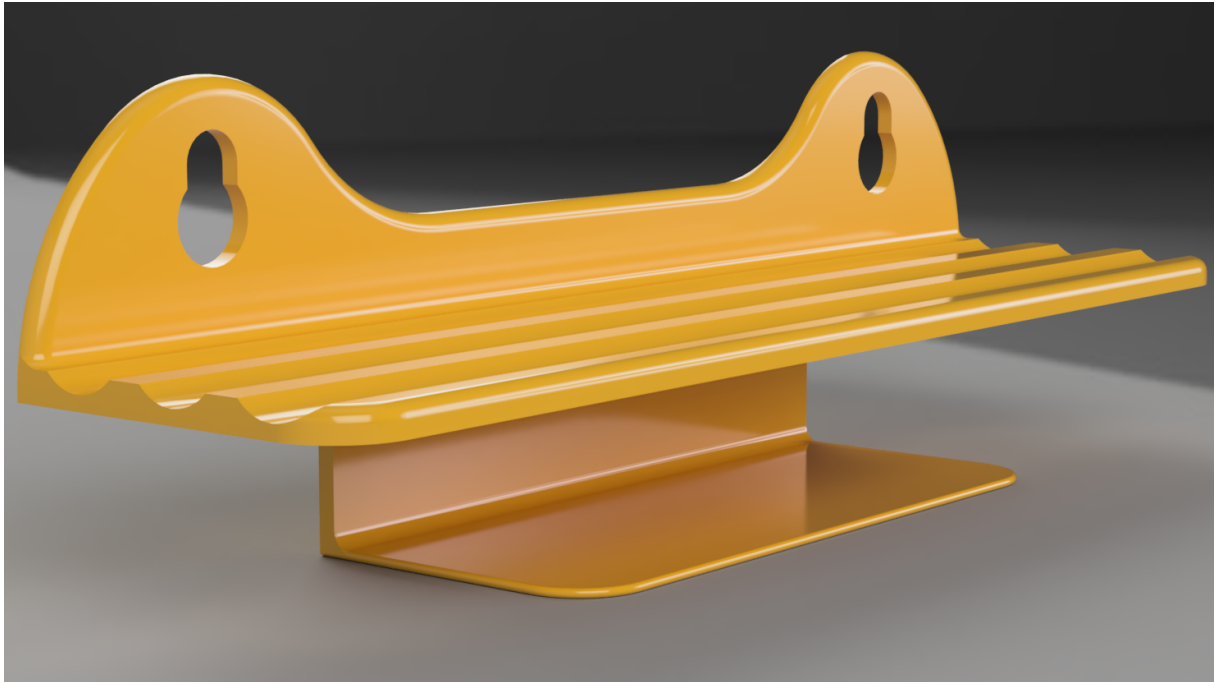
There is a magnetic version that contains captive magnets to be able to use on a traditional magnetic whiteboard.

**Suction Cups** (1.77 Inches / ~45 mm)

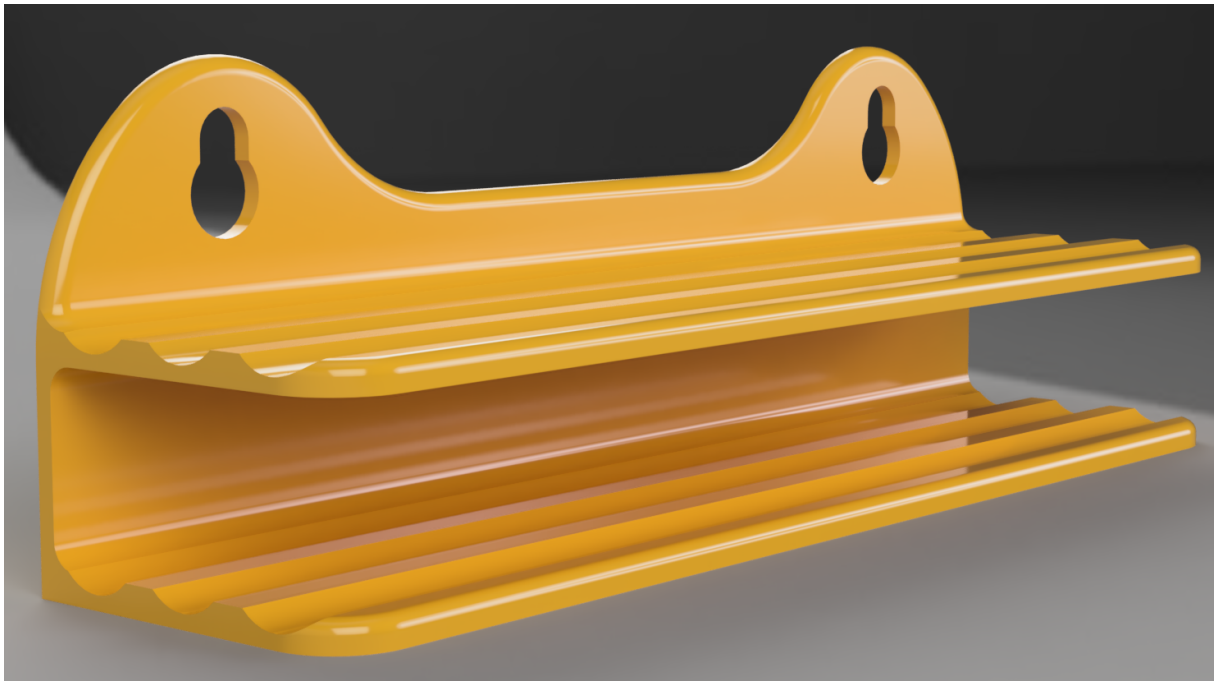
**Magnets** (10mm X 3mm)

**Note: I highly recommend rare earth magnets as they will be strong enough to hold the shelf up.**

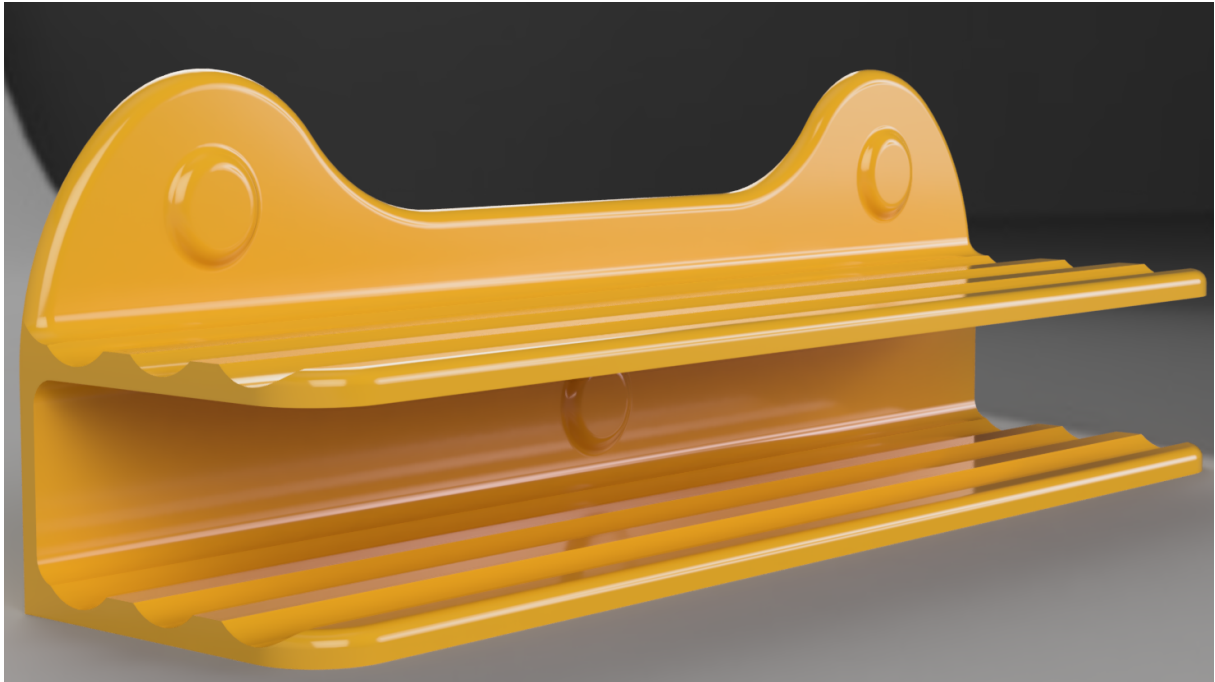
**Suction Cup - Marker and Eraser Shelf**



**Suction Cup - Dual Marker Shelf**

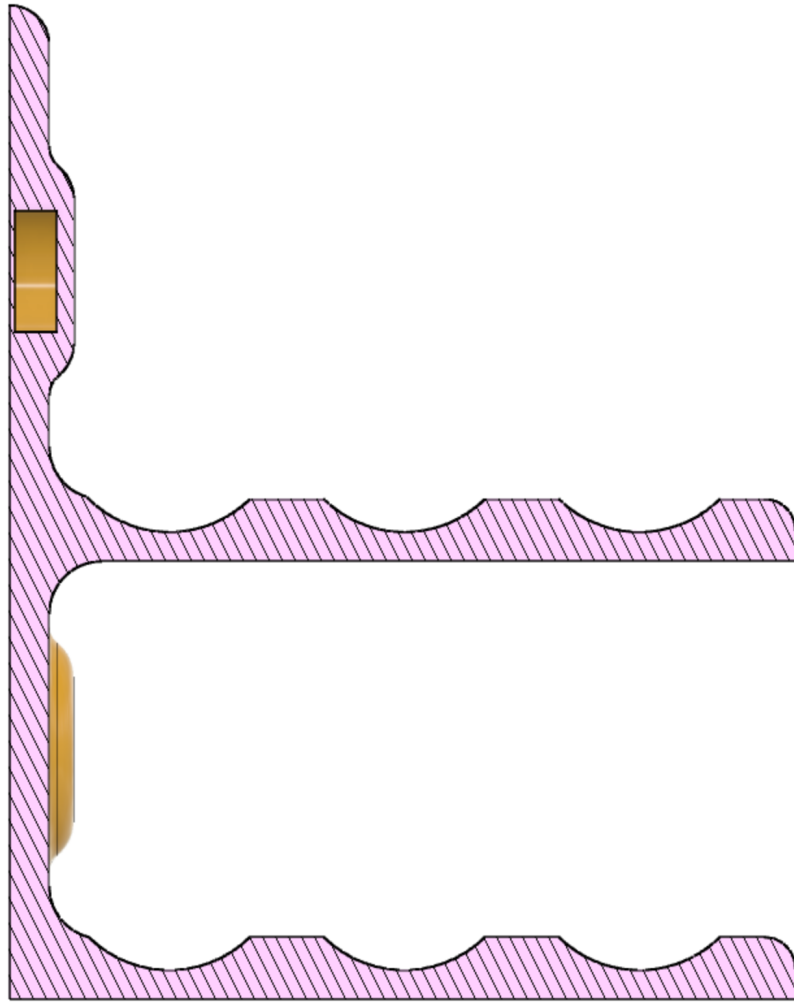


## Magnet - Dual Marker Shelf



**Pro Tip:** Add custom gcode at **Layer 20** to automatically pause the print to insert the magnets.

GCODE: M25



## Buy me a coffee

If you like my work, you can [buy me a coffee!](#)

## Model files



suction\_eraser\_v2.stl



suction\_dual\_v2.stl



magnetic\_dual\_v2.stl

## License ©

This work is licensed under a  
[Creative Commons \(4.0 International License\)](#)



**Attribution—Noncommercial—Share Alike**

---

- ✗ | Sharing without ATTRIBUTION
- ✓ | Remix Culture allowed
- ✗ | Commercial Use
- ✗ | Free Cultural Works
- ✗ | Meets Open Definition