



Modular Poop Chute



letsgo00

[VIEW IN BROWSER](#)

updated 7. 1. 2024 | published 7. 1. 2024

Summary

Modular Poop Chute system for the Bambu Lab X1 or P1 printers

[3D Printers](#) > [Bambu Lab Parts & Upgrades](#)

Tags: [poop](#) [modularity](#) [poopchute](#)

This is a modular purge (poop) chute system for the Bambu Lab printers. (X1 or P1)

The aim of this project is to collect the plastic waste in one central, easily accessible location from 3D printers.

Main features:

- Modular design, **easy to assemble**. Uses friction, no screws.
- Wide **variety of parts** to allow flexibility.
- With the help of Y splitter parts you can easily combine the output of **multiple printers**.
- Designed to use the least amount of filament possible while still being strong.

Included parts:

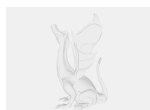
- **Back:** This part connects to the back of the Bambu Lab (X1 or P1) printer.
 - For better connection it is recommended to use **10 mm magnets** to attach to the back of the printer. (4 needed)
- **Straight:** This part allows to go straight.
 - **Tip:** Move the parts down (slightly under the build plate) in the slicer to create custom lengths.
- **Clamp:** This part is used to clamp parts to a surface.
 - The use of screws are recommended (**2xM3**), but strong double sided tape might work.
- **Turn 45 degrees:** For turning 45 degrees, for example: from straight.
- **Turn 45 corner:** For turning around corners.
 - For the input and output it requires the connecting parts to be at 45 degrees.
- **Trash Hole:** For mounting next to printer, or somewhere else, where you can easily input small plastic waste to the system.
- Several **Y parts** exist for connecting 2 printers, or adding a trash hole.

Assembly:

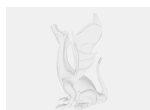
- Print the parts for your need.
 - (You can find each part on a separate plate, but you are free to combine them into one plate)
 - Note: some parts might look a bit rough due to overhangs and thinner walls.
- Attach clamps to the surface and insert the parts into the clamps.
- Place a bucket or box at the end to collect the waste.

If more parts or support are needed feel free to ask.

Model files



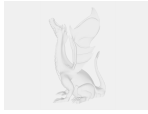
clamp.3mf



turn45.3mf



straight_10cm.3mf



straight-dual-y.3mf



turn45corner.3mf



straight-y.3mf



turn45corner-y.3mf



back.3mf



trashhole.3mf



straight_20cm.3mf

License ©

This work is licensed under a
Creative Commons (4.0 International License)



Attribution—Noncommercial—Share Alike

- ✗ | Sharing without ATTRIBUTION
- ✓ | Remix Culture allowed

- ✖ | Commercial Use
- ✖ | Free Cultural Works
- ✖ | Meets Open Definition