



## Gridfinity - SUPER SIZED!



**Black\_Wolfie**

[VIEW IN BROWSER](#)

updated 22. 3. 2024 | published 22. 3. 2024

## Summary

A remake of gridfinity refined, but with a a larger basic unit size (52mm)

[Household](#) > [Other House Equipment](#)

Tags: [storage](#) [gridfinity](#)

A modular box system based on the Gridfinity system, but with a basic dimension of 52 mm. Why 52 mm you ask? Because 42mm is too small for my fingers to rummage around in conveniently, 84mm (2x42) is a waste of space, and 52mm will fit 3x3 on my Prusa Mini+ with enough room for the draft shield thingy around the outside.

I'll keep adding components over time. So far there are vase mode bins, bins to take the microscope slide glass, and bins with a double wall for strength.

### Vase mode bins

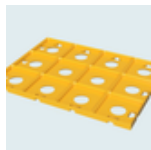
Vase mode bins now have clip-in-place lids!

You will need to print the base(s) and the bin separately and glue the base(s) onto the bin using cyanoacrylate/super glue. Some models have locators to help with placement of the bases on the bins.

## Window bins

These are designed to take a microscope slide glass with dimensions 25.5mm x 75.7mm x 1.1mm. The glass holder goes over the top of the glass and is held in place in the box by a drop of glue at each end and a firm press to get it to seat.

## This remix is based on



### Gridfinity Refined

by grizzie17

## Model files



### Grids

2 files



**grid-tile-3x3-slide-in-magnets.obj**



**grid-tile-1x1-slide-in-magnets-no-ties.obj**



### Bins - Vase Mode - Bases and Knobs

5 files



**bin-base-1x1-slide-in-magnets.obj**

☐ Magnets will be easily removable.



**bin-base-1x1-printed-in-magnets.obj**

☐ Magnets which won't fall out.



**bin-base-1x1-slide-in-magnets-with-locators.obj**



**bin-base-1x1-printed-in-magnets-with-locators.obj**



**vase-bin-lid-knob.obj**



**Bins - Vase Mode - 1x1**

7 files



**bin-vase-mode-1x1x5-rounded.obj**



**bin-vase-mode-1x1x5-label.obj**



**bin-vase-mode-1x1x5-rounded-label.obj**



**bin-vase-mode-1x1x5-rounded-locators.obj**



**bin-vase-mode-1x1x5-label-locators.obj**



**bin-vase-mode-1x1x5-rounded-label-locators.obj**



**vase-bin-lid-1x1.obj**



**Bins - Vase Mode - 1x2**

4 files



**bin-vase-mode-1x2x5-rounded.obj**



**bin-vase-mode-1x2x5-label.obj**



**bin-vase-mode-1x2x5-rounded-label.obj**

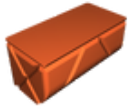


**vase-bin-lid-1x2.obj**



**Bins - Vase Mode - 2x1**

4 files



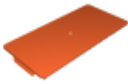
**bin-vase-mode-2x1x5-rounded.obj**



**bin-vase-mode-2x1x5-label.obj**



**bin-vase-mode-2x1x5-rounded-label.obj**



**vase-bin-lid-2x1.obj**



**Bins - Vase Mode - 2x2**

4 files



**bin-vase-mode-2x2x5-rounded.obj**



**bin-vase-mode-2x2x5-label.obj**



**bin-vase-mode-2x2x5-rounded-label.obj**



**vase-bin-lid-2x2.obj**

# License

This work is licensed under a  
**Creative Commons (4.0 International License)**



**Attribution-ShareAlike**

---

- ✗ | Sharing without ATTRIBUTION
- ✓ | Remix Culture allowed
- ✓ | Commercial Use
- ✓ | Free Cultural Works
- ✓ | Meets Open Definition