

Gambado Fan Mount (For ABC hobby with GFRP or CFRP chassis)



Flix

[VIEW IN BROWSER](#)

updated 7. 1. 2024 | published 7. 1. 2024

Summary

Fan mount designed to fit a 25mm Fan onto my 225mm Gambado FWD M-chassis.

[Hobby & Makers](#) > [RC & Robotics](#)

Tags: [rc](#) [fan](#) [rccar](#) [rccarparts](#)

Fan mount designed to fit a 25mm Fan onto my 225mm Gambado FWD M-chassis.

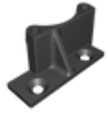
For assembly you replace the M3*8mm Screws with 2 M3*10mm Flathead screws to mount the Holder onto the chassis. then you can mount the 25mm Fan with appropriate length M3 screws on the mount.

Use Brushless Mount if Motor Magnets are too strong for the fan.

Model files



gambado-25mm-fan-mount-v3.3mf



gambado-25mm-fan-mount-brushless-v7.3mf

License

This work is licensed under a
[Creative Commons \(4.0 International License\)](https://creativecommons.org/licenses/by-nc-sa/4.0/)



Attribution—Noncommercial—Share Alike

-
- ✗ | Sharing without ATTRIBUTION
 - ✓ | Remix Culture allowed
 - ✗ | Commercial Use
 - ✗ | Free Cultural Works
 - ✗ | Meets Open Definition