



osVAC M32- R34.5/35.5x22.5 Adapter for BOSCH PKS 18 LI2



Castulus

[VIEW IN BROWSER](#)

updated 7. 1. 2024 | published 7. 1. 2024

Summary

A vacuum adapter for a Bosch hand circular saw.

[Hobby & Makers](#) > [Tools](#)

Tags: [vacuumadapter](#) [osvac](#)

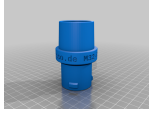
I appreciate the osVAC system.
Created a male adapter to fit my Bosch PKS 18 LI2 hand circular saw,
simply by parameterizing igamis scad template.

Outer diameter is a cone with 34.5mm/35.5mm diameter and 22.5mm
length.

Fits nicely.

Used filament leftovers to print (two-coloured).

This remix is based on



osVAC+Adapter+M32-R-Customizer

by igami

Model files



osvacadapterm32_pks.stl

License

This work is licensed under a
[Creative Commons \(4.0 International License\)](#)



Attribution—Noncommercial—Share Alike

-
- ✗ | Sharing without ATTRIBUTION
 - ✓ | Remix Culture allowed
 - ✗ | Commercial Use
 - ✗ | Free Cultural Works
 - ✗ | Meets Open Definition