



Ramp for vacuum robots



aleung

[VIEW IN BROWSER](#)

updated 7. 1. 2024 | published 7. 1. 2024

Summary

Very sturdy, no problem when stepped on by people.

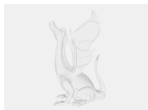
[Household](#) > [Other House Equipment](#)

Tags: [ramps](#) [vacuumrobot](#)

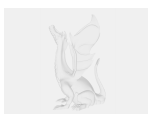
Height 20mm, depth 160mm.

Mirror the right part to get left part. You can merge multiple parts in printing.

Model files



right.step



connector.step



middle-with-web.step

[Find source .stl files on Thingiverse.com](#)

License

This work is licensed under a
Creative Commons (4.0 International License)



Attribution—Noncommercial—Share Alike

- ✗ | Sharing without ATTRIBUTION
- ✓ | Remix Culture allowed
- ✗ | Commercial Use
- ✗ | Free Cultural Works
- ✗ | Meets Open Definition