



## Tool hangar for Bambu Lab P1S



Fox Youjin

[VIEW IN BROWSER](#)

updated 7. 1. 2024 | published 7. 1. 2024

### Summary

inserted into the gap between P1S and AMS.

[3D Printers](#) > [Accessories](#)

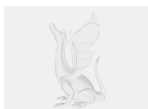
Tags: [organizer](#) [tool](#) [toolholder](#) [hangar](#) [bambulab](#) [p1s](#)

This tool hangar is inserted into the gap between Bambu lab P1S and AMS. Nippers, calipers, etc. can be hung.

It is not fixed with bolts or tape, so it can be easily removed.

If you appreciate my work and want to support me, you can [buy me a coffee](#).

### Model files



**tool-hangar.3mf**

# License

This work is licensed under a  
**Creative Commons (4.0 International License)**



## **Attribution-NonCommercial**

---

- ✗ | Sharing without ATTRIBUTION
- ✓ | Remix Culture allowed
- ✗ | Commercial Use
- ✗ | Free Cultural Works
- ✗ | Meets Open Definition