



Pet bottle press

 James77

[VIEW IN BROWSER](#)

updated 7. 1. 2024 | published 7. 1. 2024

Summary

PET bottle press saves space.



13.09 hrs



2 pcs



0.32 mm



0.40 mm



PLA



664 g

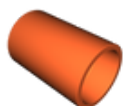


Prusa MK4

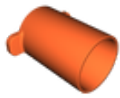
[Household](#) > [Other House Equipment](#)

Tags: [bottle](#) [press](#) [pet](#) [bottlepress](#)

Model files



base.stl



base-height.stl

Print files



base_04n_032mm_pla_mk4is_5h31m.gcode

PLA 0.40 mm 0.32 mm 5.52 hrs 271 g Prusa MK4



base-height_04n_032mm_pla_mk4is_7h34m.gcode

PLA 0.40 mm 0.32 mm 7.57 hrs 393 g Prusa MK4

License ©



This work is licensed under a
[Creative Commons \(4.0 International License\)](#)

Attribution

- ✗ | Sharing without ATTRIBUTION
- ✓ | Remix Culture allowed
- ✓ | Commercial Use
- ✓ | Free Cultural Works
- ✓ | Meets Open Definition