



Dewalt DCW210 addapter 32-40mm



Mayol74

[VIEW IN BROWSER](#)

updated 12. 1. 2024 | published 12. 1. 2024

Summary

DCW210 orbital sander adapter for vacuum hose

[Hobby & Makers](#) > [Mechanical Parts](#)

Tags: [dewalt](#) [adapter](#) [dcw210](#) [xp18](#)

DCW210 orbital sander adapter for vacuuem hose 30/42mm with left hand tread.

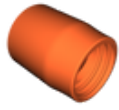
Item only fits the sander, it does not lock to.

Prints without support on the large outer diameter end.

In case you print it, pleease leave a coment or a make.

ENJOY.

Model files



dcw210-addapter-32-40mm.stl

License



This work is licensed under a
[Creative Commons \(4.0 International License\)](#)

Attribution—Noncommercial—Share Alike

-
- ✗ | Sharing without ATTRIBUTION
 - ✓ | Remix Culture allowed
 - ✗ | Commercial Use
 - ✗ | Free Cultural Works
 - ✗ | Meets Open Definition