



Complete customizeable and interchangeable shower/bath shelf system.



Mario Dittrich

[VIEW IN BROWSER](#)

updated 12. 1. 2024 | published 12. 1. 2024

Summary

This shelf is completely customizeable and interchangeable - you can exchange the shelves, remove an add other to it.

[Household](#) > [Bathroom](#)

Tags: [shelf](#) [bathroom](#) [shower](#)

Update: Forgot to upload the mounting clip :D

I was always disappointed about those “stainless” metal baskets for the shower - a few months later they start rusting.

So i tried to design my own one - if it gets dirty i put it in the dishwasher or print another. If i need more space for more shower accessories i print an extension :)

At the moment only the extension needs some glue - but it is designed to hold together by force (weight in a shelf).

Everything else is just “clicked” together with those little clips. They are designed to stand out of the back, because i wanted to offer less surface

for water as possible. So the clips are working as a spacer to the shower wall.

I believe the steps to assemble are just self explanatory together with the images.

The bare minimum are 2 of the wall-hooks and 2 of the rails - and then you can mix the shelves. If necessary print some extensions.

The Oral-B-Holder fits for Oral-B :D it fits in the curve of the shelves and can easily moved or removed - but also clamps if moved to the straight part (front) of the shelf. It also has a slot to remove the toothbrush without touching the holder with the brush.

If you want to print your own shelves,remixes or need some adjustments, feel free to contact me. Also im planning to upload the complete Fusion360 if someone wants them.

Printing is fairly easy, printed everything except the wall hooks without support. Wall-hooks printed laying on the side with some small support will offer enough strenght for the job.

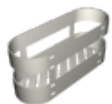
Model files



edge_only.3mf



big_tray.3mf



big_tray_with_edge.3mf

☐ need support,as an alternative you can print the big tray an the edge seperated



extension.3mf

☐ if necessary, you need 2 of the



oral-b_holder.3mf



hook_bar.3mf



rail.3mf

☐ you need 2 of them



wall_hook.3mf

☐ 150mm long - you need 2 of them



small_tray.3mf



shower_tray_system_complete.f3d

☐ Fusion 360 file with all parts included



clip.3mf

License ©

This work is licensed under a
Creative Commons (4.0 International License)



Attribution-NonCommercial

- ✗ | Sharing without ATTRIBUTION
- ✓ | Remix Culture allowed

- ✖ | Commercial Use
- ✖ | Free Cultural Works
- ✖ | Meets Open Definition