



Toddler Pattern Building Toy

 Jarcec

[VIEW IN BROWSER](#)

updated 13. 7. 2021 | published 11. 7. 2021

Summary

A simple toy for toddler to build images based off example cards.



14.11 hrs



2 pcs



0.15 mm



0.40 mm



PLA



169 g



Prusa
MK3/S/S+

[Toys & Games](#) > [Building Toys](#)

Tags: [toy](#) [toddler](#)

A simple toy for toddler to build images based off example cards.

The toy consist of a simple base with colored pieces with few patterns that can be built on top of the base. Colors are up to you, my sample patterns need the following colors:

- Red, Black, Blue, Purple, Yellow, Green, Pink, Brown

Even though the submitted gcodes are on MMU, you can simple switch the color mid-print thus no MMU is really needed.

Print all the pieces & colors and then print the attach PDF with example patterns. I recommend laminating the patterns for better shelf life.

Please don't hesitate and create custom patterns and share!

Model files



toddlertoy_layer-1-b.stl



toddlertoy_layer-2-l-a.stl



toddlertoy_layer-4-r-t-a.stl



toddlertoy_layer-1-a.stl



toddlertoy_layer-3-l-b-a.stl



toddlertoy_layer-3-l-t-a.stl



toddlertoy_layer-3-r-b-b.stl



toddlertoy_layer-2-r-a.stl



toddlertoy_layer-3-r-b-a.stl



toddlertoy_layer-4-r-b-a.stl



toddlertoy_layer-4-l-t-a.stl



toddlertoy_layer-4-l-b-b.stl



toddlertoy_layer-4-l-b-a.stl



toddlertoy_layer-4-r-b-b.stl



toddlertoy_layer-4-l-t-b.stl



toddlertoy_layer-3-l-t-b.stl



toddlertoy_layer-3-r-t-b.stl



toddlertoy_layer-2-r-b.stl



toddlertoy_layer-3-r-t-a.stl



toddlertoy_layer-2-l-b.stl



toddlertoy_layer-3-l-b-b.stl



toddlertoy_layer-4-r-t-b.stl



toddlertoy_base.stl

Print files



pieces_015mm_pla_mk3smmu2s_6h49m.gcode

🌀 PLA 🌀 0.40 mm 📏 0.15 mm ⌚ 6.82 hrs ⚖️ 76 g

🖨️ Prusa MK3S/S+ & MMU2S

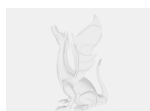


mainbody_015mm_pla_mk3smmu2s_7h17m.gcode

🌀 PLA 🌀 0.40 mm 📏 0.15 mm ⌚ 7.29 hrs ⚖️ 92 g

🖨️ Prusa MK3S/S+ & MMU2S

Other files



patterns.pdf

License ©

This work is licensed under a
Creative Commons (4.0 International License)



Attribution

- ✗ | Sharing without ATTRIBUTION
- ✓ | Remix Culture allowed
- ✓ | Commercial Use
- ✓ | Free Cultural Works
- ✓ | Meets Open Definition