



Japanese saw holder french cleat



3DNase

[VIEW IN BROWSER](#)

updated 9. 1. 2024 | published 9. 1. 2024

Summary

Holds two japanese saws on a french cleat wall



N/A



2 pcs



0.20 mm



0.40 mm



PLA
Flex



N/A



Prusa
MK3/S/S+

[Hobby & Makers](#) > [Tools](#)

Tags: [tool](#) [toolstorage](#) [frenchcleat](#) [frenchcleatsystem](#)
[japanesesaw](#)

Well...holds two saws.

After some testing I must say, it works really well.

Prints without supports.

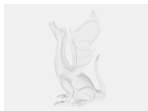
Just print the holder with the holes pointing down and you will be fine. PLA, nothing special.

The cylinders must be printed in TPU to reliably hold the saws. Tried steel balls, but those dont have enough friction.

Both with 0.2 layer height and 5% infill.

Put the cylinders in the holder (through the holes) and make sure, that they are able to “roll down”. Insert saw from below, gently pull the saw down so it will be trapped between the TPU cylinder and the holder...there you go, the saw is secure.

Model files



saw2.3mf



walze-meshed.stl



saw.3mf



saw_prusa.3mf



saw.stl



saw_prusa_wallze.3mf

Print files



saw_prusa_02mm_pla_mk3s_4h35m.gcode

PLA 0.40 mm 0.20 mm 4.59 hrs 50 g Prusa MK3/S/S+



saw_prusa_walze_02mm_flex_mk3s_23m.gcode

Flex 0.40 mm 0.20 mm 0.38 hrs 2 g Prusa MK3/S/S+

License ©

This work is licensed under a
[Creative Commons \(4.0 International License\)](#)



Attribution—Noncommercial—Share Alike

- ✗ | Sharing without ATTRIBUTION
- ✓ | Remix Culture allowed
- ✗ | Commercial Use
- ✗ | Free Cultural Works
- ✗ | Meets Open Definition