



Customizable Tonie Figure Drawer Storage Set

F Florian Mulatz

[VIEW IN BROWSER](#)

updated 7. 1. 2024 | published 7. 1. 2024

Summary

Organize wide and standard Tonies effortlessly with this customizable drawer storage set.

[Hobby & Makers](#) > [Organizers](#)

Tags: [kidsroom](#) [drawerstorage](#) [toniefigures](#) [parentinghacks](#)
[toyorganization](#) [fusion360files](#)

Optimize your child's Tonie Figure storage with this tailored baseplate set, meticulously designed to seamlessly fit into a standard drawer (measuring 400x300mm in my case).

The top plate features subtle dividers, ensuring a visually appealing and well-organized display of individual elements.

Included for your convenience are Fusion360 files, allowing you the flexibility to fine-tune the design according to your preferences.

Key Features:

Large Plate (100x50mm) with 3 Magnet Disc Holes: Ideal for accommodating wide Tonies, this component ensures a secure attachment of magnet discs, preventing any unintended disarray.

Small Plate (50x50mm) with 1 Magnet Disc Hole: Crafted for standard-sized Tonies, this element provides a compact and versatile solution to keep your collection organized.

The user-friendly Fusion360 files are open to customization, enabling you to tailor the design to your unique requirements. Enhance your child's playtime experience by providing an orderly and easily accessible home for both wide and standard Tonie Figures. Download the files now to bring this practical and stylish storage solution to life!

Printed with Creality K1

- Layer Height: 0.2mm
- Infill: 15%
- Wall Loops: 2

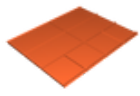
The complete project took about 7 hours to print using approximately 300g of filament. For attaching the metal plates, I used these and adhered them into the holes with a drop of super glue (https://www.amazon.de/dp/B0C1H1YS3B?psc=1&ref=ppx_yo2ov_dt_b_product_details).

PS: My printing may not be the most beautiful (I could have possibly varnished it), but it fits well for my son, and he is satisfied :)

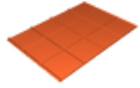
PPS: If you can tell me how to make the outer walls thicker in Fusion 360, please let me know :)

Model files





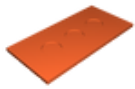
top_left.stl



bottom_right.stl



base_plate_50x50.stl



base_plate_100x50.stl



fusion360-files

3 files



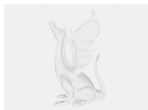
base_plate_50x50.f3d



base_plate_100x50.f3d



top_plate_with_bridges_400x300.f3d



complete_project.3mf

License

This work is licensed under a
Creative Commons (4.0 International License)



Attribution

- ✗ | Sharing without ATTRIBUTION
- ✓ | Remix Culture allowed
- ✓ | Commercial Use
- ✓ | Free Cultural Works
- ✓ | Meets Open Definition