

## FeelVR pedals rumble motor bracket ShakeIT simhub

 Cortmarshal

[VIEW IN BROWSER](#)

updated 13. 2. 2024 | published 13. 2. 2024

### Summary

Rumble your FeelVR

[Gadgets](#) > [Video Games](#)

Tags: [shakeit](#) [feelvr](#)

Attach 25mm gamepad style rumble motors to FeelVR pedal plates. Requires you to move the brake/clutch pedal plates to either of the side mounting holes. Will fit behind throttle as is.

I recommend using the motors with 4 larger diameter weights for best effect.

Uses 2 M5x20mm screws with nuts per pedal.

I already had some imperial screws laying around that I used in my images, #10-32x1", but if you search for black oxide M5 flat head hex with 90 degree countersink you'll find ones that match the original pedal plate screws.

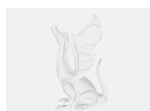
Printed in PLA, 0.2mm layer heights with 10% infill.  
Revised version with thinner arch (3mm thickness) to prevent slicers

creating hollow sections with default settings for 0.4mm nozzle users. Step file provided this time as well in case you want to modify.

## Model files



feelvrpedalsrumblebracket\_cort.stl



feelvrpedalsrumblebracket\_cort.step

## License ©

This work is licensed under a  
[Creative Commons \(4.0 International License\)](#)



**Attribution-NonCommercial**

- 
- ✗ | Sharing without ATTRIBUTION
  - ✓ | Remix Culture allowed
  - ✗ | Commercial Use
  - ✗ | Free Cultural Works
  - ✗ | Meets Open Definition