

Chain link connector



Christoph

[VIEW IN BROWSER](#)

updated 7. 1. 2024 | published 7. 1. 2024

Summary

Quick connect for chain links

[Gadgets](#) > [Other Gadgets](#)

Tags: [chain](#) [connector](#) [splice](#) [chainlink](#)

Quick connect chain adapter, that clamps together with 1 M6*10 counterscrew and nut.

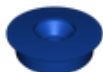
Print in flat position, 2x Link needed

Model files

nut-bottom.3mf



screw-top.3mf





link.3mf

License ©

This work is licensed under a
Creative Commons (4.0 International License)



Attribution—Noncommercial—Share Alike

- ✗ | Sharing without ATTRIBUTION
- ✓ | Remix Culture allowed
- ✗ | Commercial Use
- ✗ | Free Cultural Works
- ✗ | Meets Open Definition