

Bosch Gba 12v adaptator

 **christophe meykerque**

[VIEW IN BROWSER](#)

updated 7. 1. 2024 | published 7. 1. 2024

Summary

Ksuszka did a great job with his Bosch 12V flashlight. (thanks) I needed an adapter to use the Bosch GBA battery with...

[Hobby & Makers](#) > [Other Ideas](#)

Tags: [bosch](#) [ts100](#) [dremel](#) [thingiverse](#) [bosch12v](#)

Ksuszka did a great job with his Bosch 12V flashlight. (thanks)

I needed an adapter to use the Bosch GBA battery with my ts100 soldering iron

I moded the flashlight to use only the part I needed.

I only needed the piece with the male connectors

I inserted a DC jack connector

I did a little circuit to connect the male connectors and the plug, but you can do it with wires

After that I made a little lid

The lid is held with 3 small screws 3x10

The Faston connector are : 1217169-1 from TE

Print Settings

Printer Brand:

Prusa

Printer:

Prusa Clone

Rafts:

No

Supports:

Yes

Resolution:

0,2

Infill:

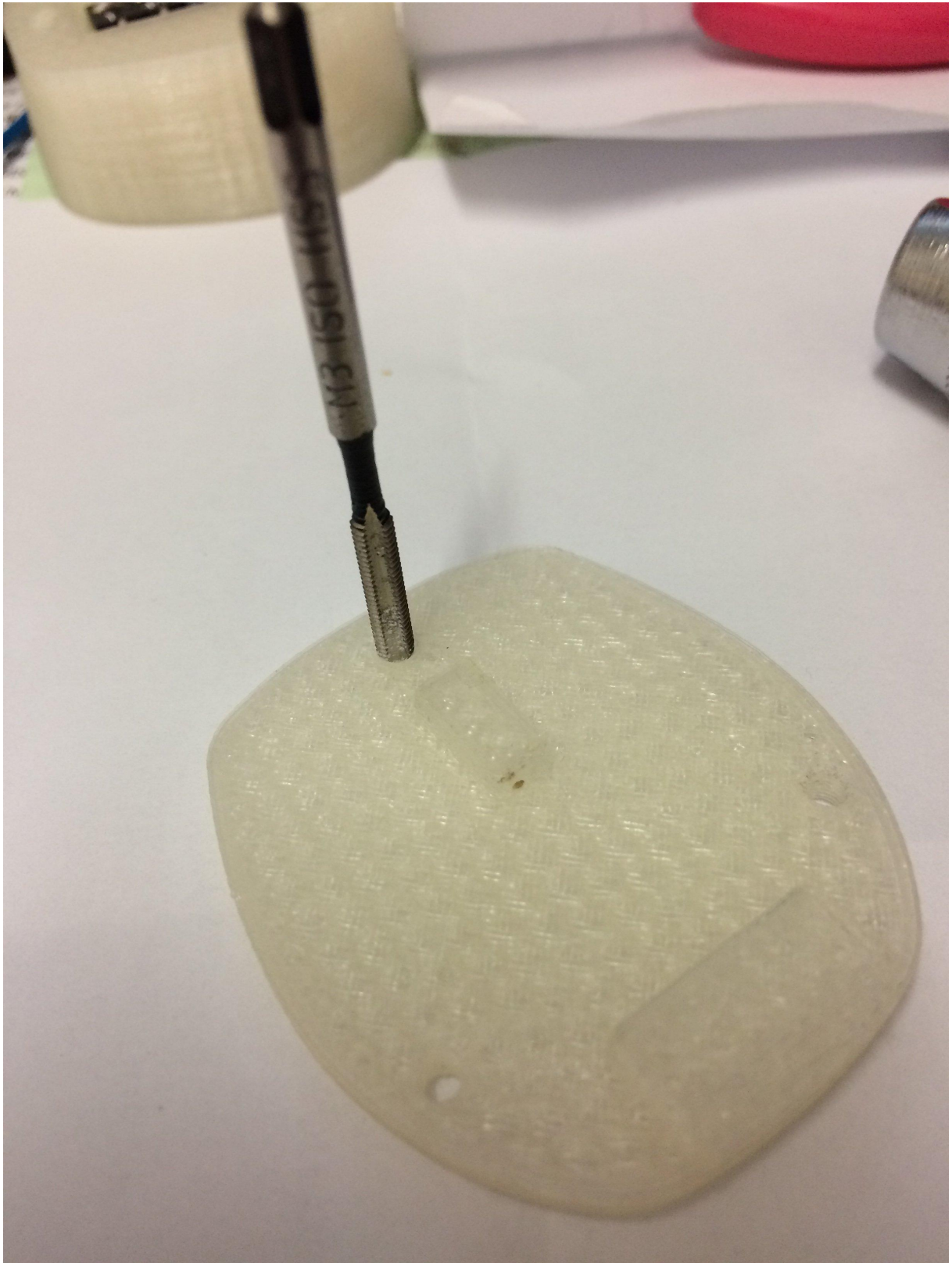
35

Notes:

supports needed only for the adaptator not for the lid

Post-Printing

You need to drill the adaptator with a drill diameter 3.2 mm you have to tap the lid with a tap of 3



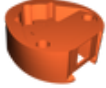
Category: DIY

Model files

gba12vadaptatorcover.stl



gba12vadaptator.stl



[Find source .stl files on Thingiverse.com](#)

License

This work is licensed under a
Creative Commons (4.0 International License)



Attribution

-
- ✗ | Sharing without ATTRIBUTION
 - ✓ | Remix Culture allowed
 - ✓ | Commercial Use
 - ✓ | Free Cultural Works
 - ✓ | Meets Open Definition