

Customizable Extruder Calibration Helper

 **Rafael Estevam**

[VIEW IN BROWSER](#)

updated 7. 1. 2024 | published 7. 1. 2024

Summary

Extruder calibration helper is a filament support with marks each 5mm.
V3: Thickness adjust option V2: Fixed thin...

[3D Printers](#) > [Test Models](#)

Tags: [customizer](#) [thingiverse](#)

Extruder calibration helper is a filament support with marks each 5mm.

V3:

- Thickness adjust option

V2:

- Fixed thin walls issue

V1:

- First realease
- I removed the STL file to prevent print issues

About license: Why not commercial while all my other things are Public Domain? I do not want you sell this, why not give this as gift ?

Custom Section

Instructions

1 - Put it on filament tip on extruder
2 - Move filament (with motor) to align with the start or some mark on the tool

3 - Move filament for a known amount and check if it's correct

EVER use a caliper to check the values, all marks on tool are for reference and a uncalibrated printer can mess with measures !

You can customize the tool/filament size

Category: 3D Printing Tests

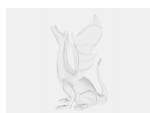
Model files



extrudercalibrationhelper_v3.stl



extrudercalibrationhelper_v2.stl



extrudercalibrationhelper.scad

[Find source .stl files on Thingiverse.com](#)

License ©

This work is licensed under a
Creative Commons (4.0 International License)

Attribution-NonCommercial



- ✗ | Sharing without ATTRIBUTION
- ✓ | Remix Culture allowed
- ✗ | Commercial Use
- ✗ | Free Cultural Works
- ✗ | Meets Open Definition