



Furniture door handle



[VIEW IN BROWSER](#)

updated 9. 1. 2024 | published 9. 1. 2024

Summary

Mounting with M4 or M5 screws, 96,5mm hole spacing.

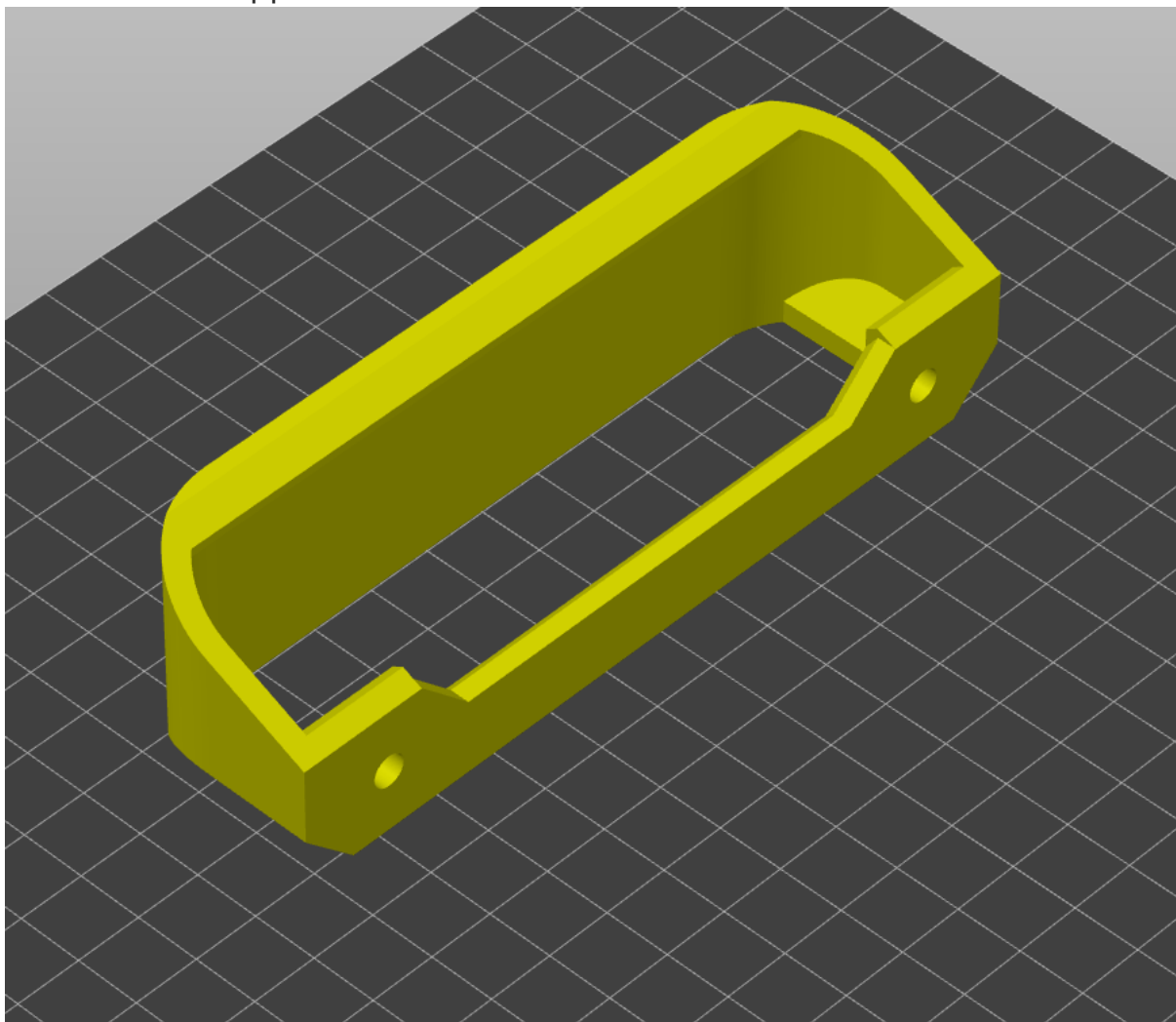
[Household](#) > [Other House Equipment](#)

Tags: [handle](#) [furniture](#) [closet](#)

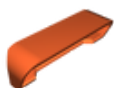
Conceptually its for general use, but now i have this in closet and later i will print those for drawers in kitchen.

Mounting with M4 or M5 screws, 96,5mm hole spacing.
Two versions - with wall and without wall for better grip.

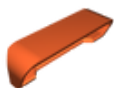
Print without supports with this orientation:



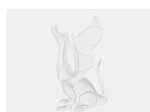
Model files



uchwyt-drzwi-szafy-verb.stl



uchwyt-drzwi-szafy-vera.stl



closet-door-handle.stp

License

This work is licensed under a
GNU



General Public License v2.0

- ✗ | Sharing without ATTRIBUTION
- ✓ | Remix Culture allowed
- ✓ | Commercial Use
- ✓ | Meets Open Definition
- i | Share under the same license