



Wall mount shelf for cable modem (Sagemcom WiFi Hub C2 - F@ST 3890V3 CHWU)



Vorpai

[VIEW IN BROWSER](#)

updated 7. 1. 2024 | published 7. 1. 2024

Summary

Wall mount shelf that fits a cable modem/router/wifi access point
"Sagemcom WiFi Hub C2 - F@ST 3890V3 CHWU"



4.22 hrs



1 pcs



0.35 mm



0.60 mm



PLA



99 g



Prusa
MK3/S/S+

[Hobby & Makers](#) > [Electronics](#)

Tags: [shelf](#) [wallmount](#) [router](#) [modem](#)

Wall mount shelf that fits a cable modem "Sagemcom WiFi Hub C2 - F@ST 3890V3 CHWU"

The supports below the shelf doubles as convenient points to tie the cables to.

The hexagonal holes in the shelf are for ventilation, as the modem has intakes on the bottom. The areas that lack holes are where the rubber feet of the modem goes. Also the holes save (some) plastic.

Screw holes were placed like they were since I already had screwholes from a previous modem (that had built in mounting holes).

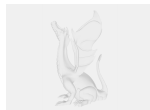
- Modelled with OnShape
- Printed in PLA.
- Meant to be printed as in the 3mf project (which is different than the STEP model orientation).
- Does require (organic) supports for a tiny part of the model.

Original OnShape model: <https://cad.onshape.com/documents/4ac58ba55b4b2868c840c6fd/w/ed9a8f8db7695050b12b6c0f/e/c0dfeefbc3489f56adcb4e06>

Model files



wallmount.3mf



wallmount.step

Print files



wallmount_06n_035mm_pla_mk3s_4h13m.gcode

PLA 0.60 mm 0.35 mm 4.22 hrs 99 g Prusa MK3/S/S+

License

This work is licensed under a
Creative Commons (4.0 International License)



Attribution-ShareAlike

- ✗ | Sharing without ATTRIBUTION
- ✓ | Remix Culture allowed
- ✓ | Commercial Use
- ✓ | Free Cultural Works
- ✓ | Meets Open Definition