



Aluminium ladder heavy duty hook parametric



RobSmo

[VIEW IN BROWSER](#)

updated 7. 1. 2024 | published 7. 1. 2024

Summary

Designed to hang aluminium ladder on the wall but can be used also for other purposes. Multi-size, parametric.

[Household](#) > [Garage](#)

Tags: [hook](#) [hanger](#) [wallmount](#) [hang](#) [aluminium](#) [ladder](#)

Hook initially designed to hang aluminium ladder on the wall.

I created the model parametric. Download fusion 360 file and adjust:

- depth (this is working area - internal flat part between wall mount and front stopper),
- width
- thickness (default is 5mm for all uploaded STLs)
- leg angle (most models are 45deg but big ones need to be 35deg to fit on the bed)

I included few STLs with different sizes.

Model files



simple-hook-45mm-15mm-45deg.stl

📄 dimensions: working area (see desc), width, leg angle.



simple-hook-55mm-15mm-45deg.stl

📄 dimensions: working area (see desc), width, leg angle.



simple-hook-65mm-20mm-45deg.stl

📄 dimensions: working area (see desc), width, leg angle.



simple-hook-65mm-15mm-45deg.stl

📄 dimensions: working area (see desc), width, leg angle.



simple-hook-75mm-20mm-45deg.stl

📄 dimensions: working area (see desc), width, leg angle.



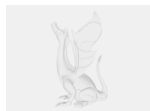
simple-hook-100mm-22-5mm-45deg.stl

📄 dimensions: working area (see desc), width, leg angle.



simple-hook-130mm-25mm-35deg.stl

📄 dimensions: working area (see desc), width, leg angle.



simple-hook-v1.f3d

📄 fusion 360 file

License

This work is licensed under a
Creative Commons (4.0 International License)



Attribution-NonCommercial

- ✗ | Sharing without ATTRIBUTION
- ✓ | Remix Culture allowed
- ✗ | Commercial Use
- ✗ | Free Cultural Works
- ✗ | Meets Open Definition