



Shower basket hook



paulwuertz

[VIEW IN BROWSER](#)

updated 7. 1. 2024 | published 7. 1. 2024

Summary

Hook up a corner shower basket in a cabin with without drilling



2.04 hrs



1 pcs



0.20 mm



0.40 mm



PLA



39 g



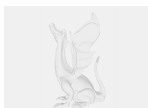
Prusa MINI /
MINI+

[Household](#) > [Bathroom](#)

Tags: [shelf](#) [hook](#) [openscad](#) [shower](#)

After moving apartments we had a new shower cabin and our previous shower basket had no cornered wall we could drill it to without drilling into tiles. So I measured the shower wall and designed a hook to keep on using the basket.

Model files



shampoohalter-1.scad



shampoohalter-1.stl

Print files



shampoohalter-1_04n_02mm_pla_miniis_2h2m.gcode

PLA 0.40 mm 0.20 mm 2.04 hrs 39 g Prusa MINI / MINI+

License

This work is licensed under a
[Creative Commons \(International License\)](#)



Public Domain

-
- ✓ | Sharing without ATTRIBUTION
 - ✓ | Remix Culture allowed
 - ✓ | Commercial Use
 - ✓ | Free Cultural Works
 - ✓ | Meets Open Definition