

Voron V2 Leadscrew Z Conversion



Takuya

[VIEW IN BROWSER](#)

updated 7. 1. 2024 | published 7. 1. 2024

Summary

This is a Voron V2.4 Leadscrew conversion. it uses well leadscrews on Z instead of belts.

[3D Printers](#) > [Voron Parts & Upgrades](#)

Tags: [v2](#) [leadscrew](#) [voron](#) [belts](#) [canbus](#)

WIP: It works, but try at your own risk

This is a Voron V2.4 Leadscrew conversion.
it uses well leadscrews on Z instead of belts.
Includes all files needed.

Includes Y endstop mount in A Drive for Umbilical conversion

Requires cutting of Deck Panel (dxf included)

BOM:

For all Sizes:

4x 5/8mm Couplers

Misc assortment of screws and nuts. Mainly M5x10 and some drop in nuts

For 350:

4x T8x8 Leadscrews 400mm

For 300:

4x T8x8 Leadscrews 350mm

For 250:

4x T8x8 Leadscrews 300mm

Model files



CAD

6 files



a-drive.step



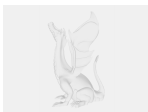
z_motor_mount_fl_br.step



front-idler-b.step



b-drive.step



z_motor_mount_bl_fr.step



front-idler-a.step



STL

14 files



b-drive-frame-lower.stl



a-drive-frame-lower.stl



b-drive-frame-upper.stl



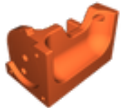
a-drive-frame-upper.stl



a_corner_baseplate_b_x2.stl



corner_b_x2.stl



corner_a_x2.stl



a_corner_baseplate_a_x2.stl



front-idler-b-top.stl



front-idler-a-top.stl



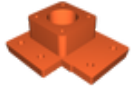
front-idler-a-bottom.stl



front-idler-b-bottom.stl



2x_z_motor_mount_fl_br.stl



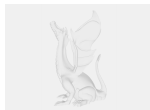
2x_z_motor_mount_bl_fr.stl

Other files



DXF for Deck Panel

1 file



deck_panel_dxf.zip

License

This work is licensed under a
GNU



General Public License v3.0

- ✗ | Sharing without ATTRIBUTION
- ✓ | Remix Culture allowed
- ✓ | Commercial Use
- ✓ | Meets Open Definition
- i | Share under the same license