



## Dragon, Unicorn and Heart Necklace / Neck Chain Fast Print



FilliFuu

[VIEW IN BROWSER](#)

updated 7. 1. 2024 | published 7. 1. 2024

### Summary

Quick print with multiple sizes

[Fashion](#) > [Other Fashion Accessories](#)

Tags: [dragon](#) [fast](#) [flexi](#) [heart](#) [necklace](#) [unicorn](#) [ams](#)

Quick to print with multiple choices including coloured, small, medium or large.

The overall print time is reduced once you remove the choices you won't be using.

Also fits on the A1 mini.

Just choose you size chain and send to Bambu studio, and select the all pendants profile - when loaded into Bambu slicer, just delete the ones you don't want.

Once printed, just use your scraper to cut the clip if it's fused where the split is - the feed your pendant and clip together.

All walls to be printed at 0.30 (except unicorn variant which is 0.40)

No supports or brim, make sure your bed is clean as you need very good adhesion, and print slow for no problems just incase. (3mf file is set)

Avoid printing in silk as its weak just incase, however I have myself tested in various silks of a known stronger brand and did not break ( see gif below, CC3D silk) Tested in many colours and all remained strong. Strength is obviously affected depending on the filament you use.

## Model files

**hook-small.stl**



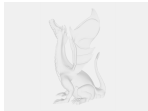
---

**p1s-x1c-thin-chain-medium.3mf**



---

**p1s-x1c-thin-chain-small.3mf**



---

**p1s-x1c-thin-chain-large.3mf**



---

**p1s-x1c-thick-chain-large.3mf**



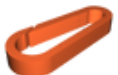
---

**chain-necklace-thin-small.stl**



---

**hook.stl**



---

**chain-necklace-thick-medium.stl**





**chain-necklace-thick-large.stl**

---



**all-heart-pendants-bambu.3mf**

---



**p1s-x1c-thick-chain-small.3mf**

---



**chain-necklace-thin-medium.stl**

---



**chain-necklace-thin-large.stl**

---



**p1s-x1c-thick-chain-medium.3mf**

---



**heart-pendant-small.stl**

---



**heart-pendant.stl**

---



**dragon-pendant-small.stl**

---



**chain-necklace-thick-small.stl**

---



**all-dragon-pendants-bambu.3mf**

---

**dragon-pendant.stl**



**all-unicorn-pendants-bambu.3mf**

---

**unicorn-pendant.stl**



**unicorn-pendant-small.stl**



## License ©



This work is licensed under a  
**Creative Commons (4.0 International License)**

**Attribution—Noncommercial—No Derivatives**

---

- ✖ | Sharing without ATTRIBUTION
- ✖ | Remix Culture allowed
- ✖ | Commercial Use
- ✖ | Free Cultural Works
- ✖ | Meets Open Definition