

## Sensor support for Optic Spy



[VIEW IN BROWSER](#)

updated 9. 1. 2024 | published 9. 1. 2024

### Summary

This is two small pieces, that fits around the sensor leads on the Optic Spy, held in place by a piece of heat shrink...

[Hobby & Makers](#) > [Electronics](#)

This is two small pieces, that fits around the sensor leads on the Optic Spy, held in place by a piece of heat shrink tubing to support the sensor and hopefully protect it from accidentally breaking when put in the toolbox along with the rest of your electronics tools.

### Print Settings

#### Printer Brand:

Ultimaker

#### Printer:

Ultimaker Original

#### Rafts:

No

#### Supports:

No

**Resolution:**

0.1mm layers

**Infill:**

20%

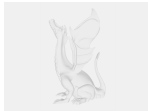
**Notes:**

These are pretty small, takes only 10-15 min to print, but you might want to slow down the printer to let the layers cool off a bit, before continuing with the next layer. I printed these with the tip of the model down.

## Model files



**sensor\_support\_lower.stl**



**sensor\_support.scad**



**sensor\_support\_upper.stl**

[Find source .stl files on Thingiverse.com](#)

## License

This work is licensed under a  
**Creative Commons (4.0 International License)**



**Attribution-ShareAlike**

- ✖ | Sharing without ATTRIBUTION
- ✔ | Remix Culture allowed
- ✔ | Commercial Use
- ✔ | Free Cultural Works
- ✔ | Meets Open Definition