

## Bambu Lab X1C Faster Start G-code - no wait for bed preheat



Zack

[VIEW IN BROWSER](#)

updated 9. 1. 2024 | published 9. 1. 2024

### Summary

Removes the bed preheat waiting at the start, moves it to just before any printing actually starts.

[3D Printers](#) > [Bambu Lab Parts & Upgrades](#)

Tags: [gcode](#) [bambu](#) [bambulabx1](#) [bambulab](#)  
[bambulabx1carbon](#)

Bambu's machine start G-code has the following right in the beginning (lines 23-26):

```
;===== heatbed preheat =====  
M1002 gcode_claim_action : 2  
M140 S[bed_temperature_initial_layer_single] ;set bed temp  
M190 S[bed_temperature_initial_layer_single] ;wait for bed temp
```

This causes the bed to fully preheat before proceeding with any other functions. As far as I can tell, this is an unnecessary delay.

I simply moved the M190 to occur after filament purge, nozzle wipe, homing, bed leveling, etc. I moved it to just before the “nozzle load line”

(line 256-257), which occurs before flow calibration & purge lines, so it will still ensure the bed is fully heated before any filament hits the build plate.

It shaves a couple minutes of bed heating off the time to start printing, which amounts to decent time savings for small quick prints.

This is the ONLY modification made to Bambu's default G-code dated 20230707.

**AS WITH ANY CUSTOM G-CODE, PLEASE REVIEW BEFORE USING, AND USE AT YOUR OWN RISK. I AM NOT RESPONSIBLE FOR YOUR PRINTER.**

I've been using this on my printer, and I can't imagine this simple change causing any problems. I will do my best to keep this updated with any changes Bambu makes elsewhere in their start code.

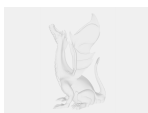
## Model files



### 3dbenchy.stl

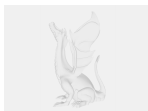
☐ Just a normal Benchy, had to upload something lol

## Other files



### printer-presets.zip

☐ Printer Profile as JSON file exported from Bambu Studio



### bambu-lab-x1-carbon-04-nozzle-faster.txt

☐ text file containing machine start G-code

## License ©

This work is licensed under a  
[Creative Commons \(4.0 International License\)](#)



## Attribution-ShareAlike

---

- ✘ | Sharing without ATTRIBUTION
- ✔ | Remix Culture allowed
- ✔ | Commercial Use
- ✔ | Free Cultural Works
- ✔ | Meets Open Definition