



Tip Toi pen holder



Schehlein

[VIEW IN BROWSER](#)

updated 7. 1. 2024 | published 7. 1. 2024

Summary

Holder for a Tip Toi pen that can be clamped to a shelf or cupboard.



3.13 hrs



3 pcs



0.20 mm



0.40 mm



PLA
PET



44 g



Prusa MK4

[Household](#) > [Other House Equipment](#)

Tags: [holder](#) [case](#) [pen](#) [children](#) [audio](#) [clamp](#) [learning](#)
[quiver](#) [tiptoi](#)

This is a holder for a Tip Toi pen that can be clamped to a shelf or a cupboard.

The model contains three parts:

1. The quiver: This part is used to hold the pen
2. The decoration part: This one is optional. It is just for the look.
3. The clamp: You can glue the quiver to the clamp. The clamp is a remix of the G-Clamp; Mini Vice. You can also use the quiver standalone and glue it to other objects.

I printed the quiver and the decoration part upright with a brim and 15% infill and a bit support for the first few layers. Both are Prusament-PLA. The clamp is printed with PETG and 30% infill.

Mounting: Twist the screw through the hole in the frame and click the endcap to the top of the screw. Glue the decoration to the quiver then glue the whole thing to the clamp.

This remix is based on



G-Clamp ; Mini Vice

by markus_m83

Model files



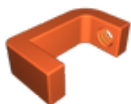
quiver-tiptoi-holder.stl



decoration-tiptoi-holder.stl



clamp-screw-end.stl



clamp-frame.stl



clamp-screw.stl

Print files



quiver-tiptoi-holder_04n_02mm_pla_mk4is_1h8m.bgcode

⚙️ PLA ⚙️ 0.40 mm ⚙️ 0.20 mm ⌚ 1.13 hrs ⚖️ 21 g 🖨️ Prusa MK4



decoration-tiptoi-holder_04n_02mm_pla_mk4is_24m.bgcode

⚙️ PLA ⚙️ 0.40 mm ⚙️ 0.20 mm ⌚ 0.40 hrs ⚖️ 2 g 🖨️ Prusa MK4



gclamp-short_04n_02mm_petg_mk4is_1h36m.bgcode

⚙️ PET ⚙️ 0.40 mm ⚙️ 0.20 mm ⌚ 1.60 hrs ⚖️ 21 g 🖨️ Prusa MK4

License ©



This work is licensed under a
[Creative Commons \(4.0 International License\)](https://creativecommons.org/licenses/by-nc-sa/4.0/)

Attribution—Noncommercial—Share Alike

- ✖ | Sharing without ATTRIBUTION
- ✓ | Remix Culture allowed
- ✖ | Commercial Use
- ✖ | Free Cultural Works
- ✖ | Meets Open Definition