

Webcam support for anycubic Kobra 2 Max - Kobra 2 Pro - Kobra 2 Plus

 **AtelierGBB**

[VIEW IN BROWSER](#)

updated 7. 1. 2024 | published 7. 1. 2024

Summary

Webcam support for anycubic followed by Z.

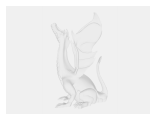
[3D Printers](#) > [Anycubic Parts & Upgrades](#)

Tags: [webcam](#) [anycubic](#) [kobra2](#) [kobra2pro](#) [kobra2max](#)
[kobra2plus](#)

Webcam support for anycubic followed by Z.
Simple installation and printing.

You will need 2 m3*12 screws, and 6mm x 3mm magnets, or double-sided tape. 6mm x 3mm magnets <https://amzn.to/48H9w1R> m3*12 screws <https://amzn.to/3TQ9C32> Low style camera web cam usb. <https://amzn.to/4aPTO6g> High style camera connect. <https://amzn.to/4aLR0XM>

Model files



support-small-webcam-anycubic.3mf



support-small-webcam-anycubic.3mf



support-small-webcam-anycubic.stl



support-small-webcam-anycubic.stl

License ©

This work is licensed under a
[Creative Commons \(4.0 International License\)](https://creativecommons.org/licenses/by-nc-nd/4.0/)



Attribution—Noncommercial—No Derivatives

- ✗ | Sharing without ATTRIBUTION
- ✗ | Remix Culture allowed
- ✗ | Commercial Use
- ✗ | Free Cultural Works

✖ | Meets Open Definition