



A knife for opening a letter



Leon Ceple

[VIEW IN BROWSER](#)

updated 7. 1. 2024 | published 7. 1. 2024

Summary

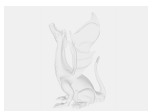
A knife for opening a letter. Print PLA/PET-g. Print vertically. Color as desired, without support.

[Household](#) > [Office](#)

Tags: [office](#) [printer](#) [letter](#) [knife](#) [officeorganization](#)

A knife for opening a letter. Print PLA/PET-g. Print vertically. Color as desired, without support.

Model files



knife-1.3mf



knife-model.stl

License

This work is licensed under a
Creative Commons (International License)



Public Domain

- ✓ | Sharing without ATTRIBUTION
- ✓ | Remix Culture allowed
- ✓ | Commercial Use
- ✓ | Free Cultural Works
- ✓ | Meets Open Definition