

Thermomix Key



Roland

[VIEW IN BROWSER](#)

updated 12. 1. 2024 | published 12. 1. 2024

Summary

Thermomix Key for easier emptying dough from mixpot. Thermomix Schlüsse um Teig einfacher aus dem Mixtopf zu bekommen.

[Household](#) > [Kitchen](#)

Tags: [key](#) [thermomix](#)

Thermomix Key for easier emptying dough from mixpot.

Thermomix Schlüsse um Teig einfacher aus dem Mixtopf zu bekommen.

Print Settings

Printer Brand:

Prusa

Printer:

I3 MK3S

Rafts:

No

Supports:

No

Resolution:

0.2

Infill:

25%

Filament: PLA PLA

Category: Kitchen & Dining

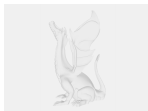
Model files



thermomix_key.step



thermomix_key.stl



thermomix_key.f3d

[Find source .stl files on Thingiverse.com](#)

License ©

This work is licensed under a
Creative Commons (4.0 International License)



Attribution

-
- ✗ | Sharing without ATTRIBUTION
 - ✓ | Remix Culture allowed
 - ✓ | Commercial Use

- ✓ | Free Cultural Works
- ✓ | Meets Open Definition