



Case for a C14 electrical AC socket



Molitoris

[VIEW IN BROWSER](#)

updated 2. 12. 2022 | published 2. 12. 2022

Summary

A case for a C14 electrical AC socket with AC-08



3.45 hrs



1 pcs



0.20 mm



0.40 mm



PLA



49 g



Prusa
MK3/S/S+

[Hobby & Makers](#) > [Electronics](#)

Tags: [socket](#) [rockerswitch](#)

Case for a C14 electrical socket (type AC-08). See technical drawing for dimensions.

Print settings

- PLA
- 0.2 mm layer height
- 3 parts w/o supports

Additional material

- M3 x 8 mm with hex-nuts (6x)
- M2 x 8 mm with hex-nuts (1x)

- Drill 2 mm
- wood screw 3 mm (2x)

Post-processing

- drill hole

If you like the model [buy me a coffee](#) :)



Buy me a coffee

Model files



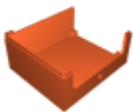
rocker_switch_case-v6.f3d



rocker_switch_case_door_v3.stl



rocker_switch_case_top_v3.stl



rocker_switch_case_bottom_v3.stl

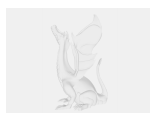
Print files



rocker_switch_case_v3_02mm_pla_mk3s_3h27m.gcode

🌀 PLA 📏 0.40 mm 📏 0.20 mm ⌚ 3.45 hrs ⚖️ 49 g 🖨️ Prusa MK3/S/S+

Other files



rocker_switch_case-drawing-v3.pdf

☐ technical drawing

License

This work is licensed under a
Creative Commons (4.0 International License)



Attribution

-
- ✗ | Sharing without ATTRIBUTION
 - ✓ | Remix Culture allowed
 - ✓ | Commercial Use
 - ✓ | Free Cultural Works
 - ✓ | Meets Open Definition