



RuuviTag Vertical Stand/Holder



ignitedPotato

[VIEW IN BROWSER](#)

updated 15. 1. 2024 | published 15. 1. 2024

Summary

Vertical stand/holder for standard RuuviTags. It is optimized for low filament usage.

[Hobby & Makers](#) > [Electronics](#)

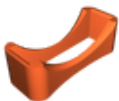
Tags: [mount](#) [sensor](#) [snapfit](#) [ruuvi](#) [ruuvitag](#)

This is a vertical stand/holder for standard RuuviTags. It is optimized for low filament usage while providing optimal foothold.

It is in part inspired by the original RuuviTag stand.

A standard RuuviTag should easily snap into the stand. No further assembly necessary.

Model files



ruuvitag-holder.stl

License

This work is licensed under a
Creative Commons (4.0 International License)



Attribution—Noncommercial—Share Alike

- ✗ | Sharing without ATTRIBUTION
- ✓ | Remix Culture allowed
- ✗ | Commercial Use
- ✗ | Free Cultural Works
- ✗ | Meets Open Definition