



## Logic Puzzel



SehrKreativ

[VIEW IN BROWSER](#)

updated 24. 1. 2024 | published 24. 1. 2024

## Summary

This is a fun little logic puzzel for everyone

[Toys & Games](#) > [Puzzles & Brain-teasers](#)

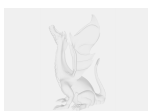
Tags: [ring](#) [chain](#) [gadget](#) [logic](#)

The goal of this puzzel is to get the ring inside the “handcuffs”. After that you can try to get it seperated again. Its not that easy and the goal is to be patient and not aggressive :D

This logic puzzle is printed in PLA. For maximum stability, I recommend using 100% infill or a more durable material. I printed the model with the normal grid support from PrusaSlicer. If you have better ideas, please let me know

Have fun puzzeling :D

## Model files



ring.stp



**chain.stp**

---



**ring.stl**

---



**chain.stl**

## License ©

This work is licensed under a  
[Creative Commons \(4.0 International License\)](#)



### Attribution

---

- ✗ | Sharing without ATTRIBUTION
- ✓ | Remix Culture allowed
- ✓ | Commercial Use
- ✓ | Free Cultural Works
- ✓ | Meets Open Definition