



Goose Hydra Keycap and Component Cover



gos-mos

[VIEW IN BROWSER](#)

updated 15. 1. 2024 | published 15. 1. 2024

Summary

This is a choc v1 compatible goose hydra keycap and component cover.

[Gadgets](#) > [Other Gadgets](#)

Tags: [keycap](#) [keyboard](#) [alphabet](#) [duck](#) [ducky](#)
[rubberduck](#) [choc](#) [chocv1](#)

- a component cover (intended for a crkbd/corne keyboard) of a goose hydra chasing a rubber ducky, and
- associated keycap which has all the hydra's beaks sticking out of the face of the keycap.

Printed in PLA, 0.12 layer height, rotated to point the faces into the air with supports enabled and a support blocker around the heads.

This remix is based on



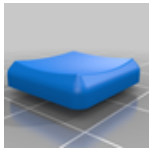
Goose Hydra

by MZ4250



Floating Rubber Duck

by sigma37



MBK Choc Low Profile Keycaps

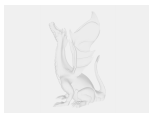
by bendavis78



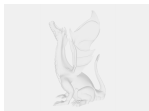
Corne Chocolate keyboard case optimized for BLE micro pro / CRKBD

by robamoto

Model files



goose_hydra_component_cover.3mf



goose_hydra_keycap.3mf



goose_hydra_keycap.stl



goose_hydra_component_cover.stl

License

This work is licensed under a
Creative Commons (4.0 International License)



Attribution—Noncommercial—Share Alike

- ✗ | Sharing without ATTRIBUTION
- ✓ | Remix Culture allowed
- ✗ | Commercial Use
- ✗ | Free Cultural Works
- ✗ | Meets Open Definition