

RPI Logo Wall Art



Allanwrench47

[VIEW IN BROWSER](#)

updated 17. 1. 2024 | published 17. 1. 2024

Summary

YET ANOTHER Logo wall art, this time its rasbian, modular 3 component design allowing customizability without MMU/AMS.

[Art & Design](#) > [2D Plates & Logos](#)

Tags: [wall](#) [logo](#) [mmu](#) [no](#) [art](#) [3dprinter](#) [rasberrypi3](#)
[rpi](#) [raspi](#) [supports](#) [2dart](#) [nosupport](#) [rasberrypicamera](#)
[wallart](#) [nommu](#) [klipper](#) [berry](#) [klipperscreen](#)
[rasberrypicase](#) [rasberrypi](#) [rasberrypi2](#) [rasberrypizero](#)
[rasberrypi3case](#) [rasberrypi4case](#) [ras](#) [klipperexpandermount](#)
[ams](#) [rasberrypi3aplus](#) [rasbery](#) [raberrylogo](#) [rasbian](#)
[noams](#)

UPDATES: 1/17/24 Added a hollow single piece, single color silhouette of the rpi logo

Print settings:

.2 layer height

.4 nozzle

fan **off** for **baseplate** to prevent warping

FAST PRINT:

set top layers to 0

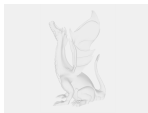
set infill to 0

set at least 3 perimeters

Assembly:

Sometimes the pieces have enough extra material to stay in the baseplate with friction but some pieces might stay a lot better with a little glue of your choice!

Model files



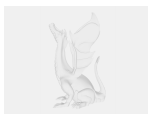
rpi-baseplate.3mf



rpi-berry.3mf



rpi-leaf-insert.3mf



hollow-silouhette.3mf

License ©

This work is licensed under a
GNU

General Public License v2.0



- ✖ | Sharing without ATTRIBUTION
- ✓ | Remix Culture allowed
- ✓ | Commercial Use
- ✓ | Meets Open Definition
- i | Share under the same license