



Ghost Driver Clamp for Scalextric Digital

K Kevin Garrett

[VIEW IN BROWSER](#)

updated 15. 1. 2024 | published 15. 1. 2024

Summary

Run a Scalextric Digital car unattended so that you can have traffic on your track all by yourself.

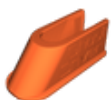
[Sports & Outdoor](#) > [Indoor Sports](#)

Tags: [slotcar](#) [scalextric](#) [slotcar132](#) [scalextricsport](#)

This is a simple clamp and screw that fits the unsimple shape of the Scalextric Digital Controller, so that you can hold and adjust the throttle position to run a car on your track unattended.

These were made with a .6 nozzle using PETG. PLA could probably be used, but I find that screws in PLA tend to bind.

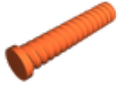
Model files



ghost-driver-clamp.stl



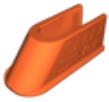
block.stl



screw.stl



knob.stl



ghost-driver-clamp.3mf



block-screw.3mf



knob.3mf

License ©

This work is licensed under a
[Creative Commons \(4.0 International License\)](#)



Attribution

- ✗ | Sharing without ATTRIBUTION
- ✓ | Remix Culture allowed
- ✓ | Commercial Use
- ✓ | Free Cultural Works
- ✓ | Meets Open Definition

