



"Ludo Game" (Člověče, nezlob se!)



Dino

[VIEW IN BROWSER](#)

updated 15. 12. 2021 | published 25. 7. 2021

Summary

"Ludo" board game for up to 4 players



9.75 hrs



2 pcs



0.20 mm
0.30 mm



0.40 mm



PLA



192 g



Prusa
MK3/S/S+

[Toys & Games](#) > [Board Games](#)

Ludo

"Ludo" is a traditional game played all around the globe, now available in easily 3d printable format.

Printing Instructions

I have included both 3mf files and gcode. They are already fine-tuned in order to get the best results I could achieve on my printer. The whole project takes about 13 hours to print.

You are going to need to print:

- 1x**PlayingBoard**
- 4x**Bundle**

The bundle is all same color parts sliced in one gcode file.

If you want to slice files on your own there are all needed STL files, but i should give you some tips on how to print them.

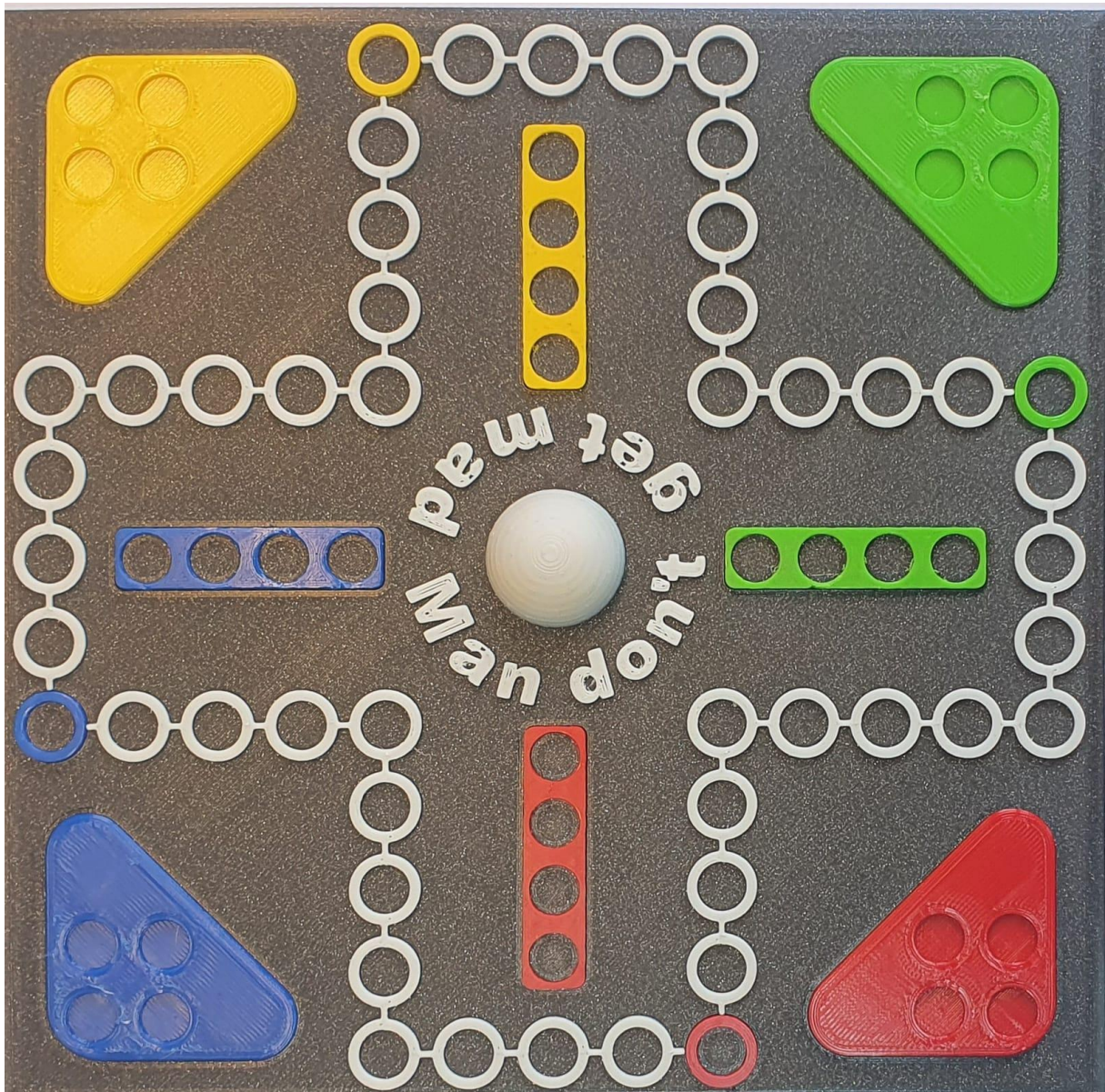
Instructions (for slicing)

- Print in PLA (if possible), I had stringing issues with PETG when printing mini-figures for game
- Print Playing Board with 0.2mm layer height and add color change at Z=7.3 mm
- Print mini-figures with a maximum of 0.15mm layer height
- Print 4 figures, 4 corners, 4 color rings, 4 bases, and one playing board

Assembly

Assembly is pretty straightforward. Once you printed all the parts pop red Corner, Base, and Color Ring in one corner, green in another one, etc. Of course, you can choose any colors you have or like. Parts are designed to be a tight fit so don't be afraid to push it a little stronger when assembling.

Refer to the picture below for assembly.



Playing rules

If you don't know the rules, don't worry, they are very simple. You can find a pdf. file with rules in the files directory.

Have fun and happy printing :)

Model files



corner_stl.stl



bundle_3mf.3mf



playingboard_3mf.3mf



base_stl.stl



playingboard_stl.stl

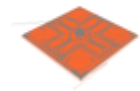


figure_stl.stl



colorring_stl.stl

Print files



playingboard_02mm_pla_mk3s_8h40m.gcode

🌀 PLA 🌀 0.40 mm ≡ 0.20 mm ⌚ 8.67 hrs ⚖️ 180 g 🖨️ Prusa MK3/S/S+

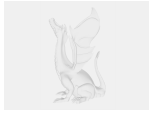
📄 Pre sliced playing board ready for printing



bundle_03mm_pla_mk3s_1h5m.gcode

🌀 PLA 🌀 0.40 mm ≡ 0.30 mm ⌚ 1.08 hrs ⚖️ 12 g 🖨️ Prusa MK3/S/S+

Other files



dont-get-mad_rules.pdf

📄 Rules for playing the game

License ©



This work is licensed under a
Creative Commons (4.0 International License)

Attribution-NonCommercial

-
- ✗ | Sharing without ATTRIBUTION
 - ✓ | Remix Culture allowed
 - ✗ | Commercial Use
 - ✗ | Free Cultural Works
 - ✗ | Meets Open Definition