



## Gridfinity Storage Box with FlipOver-Hinge (turn the lid around and save space)



Whitehawk

[VIEW IN BROWSER](#)

updated 28. 1. 2024 | published 28. 1. 2024

## Summary

Remix with a new simpler FlipOverHinge and modular walls

[Hobby & Makers](#) > [Organizers](#)

This remix of the great Gridfinity Storage Box by Pred has a totally different hinge design.

The box is still compatible with the original design by Pred, beside of the hinge mechanism.

### Pros of the new design:

- now you can put the StorageBox on the backside
- you can flip over the whole lid under the bottom to save much space while working on your desk or wherever you need it.
- sturdier hinge
- easier to print

You will need 4x M3x30mm bolts for the hinges.

---

## Update 21.01.2024

- modular walls can be printed separately and screwed together afterwards
  - 16x M3x6mm countersunk screws for walls (<8U tall + 8screws)
  - M3x6-20mm for the base
- printing support for the latch-tabs, directly modelled in Fusion360 and easily removable
- latch design matched to the one from flimay2k
- minor design changes to make the walls modular and the sides printable laying flat
- decided to ditch the 4 latch version for better compatibility with the original design

If you don't like the modular design, but still want to benefit from the FlipOverHinge, simply step back in the Fusion360 timeline and export the box uncut.

The aim of making the box modular is to be able to print a bigger box on a smaller printer in the future.

If you have an idea on how to divide the bottom plate and especially the top-lid, then please, let me know.

---

**!!! IMPORTANT!!! If you have downloaded the 6 Latch files before the 17th Jan 2024, then reload them, because there have been some minor mistakes!**

I decided to leave the design with 6 latches for bigger compatibility with the original design by Pred. But you can delete the additional latches by yourself in Fusion 360 if you want.

The old files with the 4latch design can still be found in the version1 Folder.

## This remix is based on



**Latch for Gridfinity box modded**

by flimay2k



## Gridfinity Storage Box by Pred (now parametric)

by Pred

### Model files

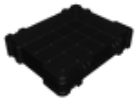


v1\_old\_FlipOverHinge\_4-6latches

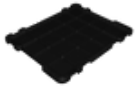
9 files



flipover\_hinge\_m3x30.3mf



base-5x4.3mf



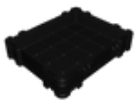
lid-5x4.3mf



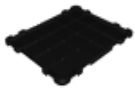
gridfinitystoragebox\_parametric\_flipoverhinge\_4latc... .f3d



gridfinitystoragebox\_parametric\_flipoverhinge\_4latc... .step



base\_5x4\_6\_latches.3mf



lid\_5x4\_6\_latches.3mf



**gridfinitystoragebox\_parametric\_flipoverhinge\_6latc... .f3d**



**gridfinitystoragebox\_parametric\_flipoverhinge\_6latc... .step**



**gridfinitystoragebox\_parametric\_flipoverhinge\_v2.step**



**gridfinitystoragebox\_parametric\_flipoverhinge\_v2.f3d**



**flipover\_hinge\_m3x30.3mf**



**latch.3mf**



**wall\_front\_5x4.3mf**



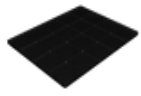
**wall\_left\_5x4.3mf**



**wall\_right\_5x4.3mf**



**wall\_back\_5x4.3mf**



**base\_bottom\_5x4.3mf**



**corner\_fl\_6u.3mf**

☐ corner front left 6U high



**corner\_fr\_6u.3mf**

☐ corner front right 6U high



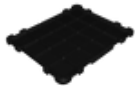
**corner\_bl\_6u.3mf**

☐ corner back left 6U high



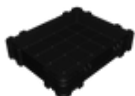
**corner\_br\_6u.3mf**

☐ corner back right 6U high



**lid\_5x4.3mf**

☐ compatible with the modular and non modular version



**base\_5x4\_onepiece.3mf**

☐ non modular version

## License

This work is licensed under a  
[Creative Commons \(4.0 International License\)](https://creativecommons.org/licenses/by-nc/4.0/)



**Attribution-NonCommercial**

✖ | Sharing without ATTRIBUTION

- ✓ | Remix Culture allowed
- ✗ | Commercial Use
- ✗ | Free Cultural Works
- ✗ | Meets Open Definition