

SKADIS Movable holders

j juke94

[VIEW IN BROWSER](#)

updated 26. 1. 2024 | published 26. 1. 2024

Summary

Skadis holder for multiples hardwares

[Household](#) > [Other House Equipment](#)

Tags: [ikea](#) [drill](#) [skadis](#) [bitholder](#) [ts101](#)

I just design a generic Movable holder for multiple tools/hardwares like :

- Bits holder,
- Wood drill,
- BOSCH Flat Drill,

it can fit for screwdrivers and others...open your mind ^^

it can move from left to right....

it is made up of 3 parts :

1. Skadis mount
2. Movable Holder
3. and lock for attach the parts

enjoy

Other holders :

TS101 Solder

<https://www.printables.com/fr/model/739325-skadis-ts101-movable-holder>

Facom precision screw drivers

<https://www.printables.com/fr/model/739322-skadis-facom-screw-drivers-holders>

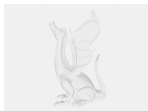
Model files



skadismount.f3d



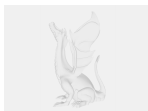
lock.f3d



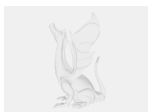
ts101-holder.f3d



wooddrilholder.f3d



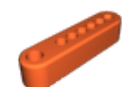
bitsholder_with_tiny.f3d



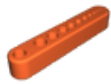
bitsholder.f3d



flatdrillholder.stl



bitsholder_blue.stl



wooddrilholder.stl



bitsholder.stl



bits-holder-whith-tiny.stl



skadismount.stl



lock.stl



template.f3d

License ©



This work is licensed under a
[Creative Commons \(4.0 International License\)](https://creativecommons.org/licenses/by-nc/4.0/)

Attribution-NonCommercial

- ✗ | Sharing without ATTRIBUTION
- ✓ | Remix Culture allowed
- ✗ | Commercial Use
- ✗ | Free Cultural Works
- ✗ | Meets Open Definition

