



Sag Caliber - Fork and Shock



Thomas Hoeser

[VIEW IN BROWSER](#)

updated 15. 1. 2024 | published 15. 1. 2024

Summary

Fusion 360 Model does contain user parameters for travel length

[Sports & Outdoor](#) > [Outdoor Sports](#)

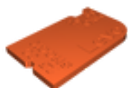
Tags: [mtb](#) [bicycle](#) [bicycletool](#) [sag](#)

Typically you would set sag to 25% for firm and 30% for plush.

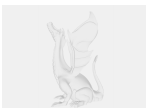
This caliper is providing both values.

I print a version for each bike.

Model files



fork-caliber-v1.stl



fork-caliber-v2.f3d

License

This work is licensed under a
Creative Commons (4.0 International License)



Attribution—Noncommercial—Share Alike

- ✗ | Sharing without ATTRIBUTION
- ✓ | Remix Culture allowed
- ✗ | Commercial Use
- ✗ | Free Cultural Works
- ✗ | Meets Open Definition