



Cupholder BMW X1 v2



MakerRonald

[VIEW IN BROWSER](#)

updated 25. 7. 2021 | published 25. 7. 2021

Summary

cupholder for key and garage door remote. add some foamtape for a smooth fit.



4.61 hrs



1 pcs



0.20 mm



0.40 mm



PLA



73 g



Prusa MINI /
MINI+

[Hobby & Makers](#) > [Automotive](#)

Tags: [cup](#) [key](#) [cupholder](#) [bmw](#)

cupholder for key and garage door remote.

add some foamtape for a smooth fit.

This remix is based on



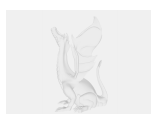
BMW F48 X1 cupholder

by MakerRonald

Model files



bmw-cupholder-v4.stl



bmw-cupholder-v4.f3d

Print files



bmwcupholder_02mm_pla_mini_4h36m.gcode

🌀 PLA 🌀 0.40 mm 📏 0.20 mm ⌚ 4.61 hrs 📊 73 g 🖨️ Prusa MINI / MINI+

License ©

This work is licensed under a
[Creative Commons \(International License\)](#)



Public Domain

-
- ✓ | Sharing without ATTRIBUTION
 - ✓ | Remix Culture allowed
 - ✓ | Commercial Use
 - ✓ | Free Cultural Works
 - ✓ | Meets Open Definition

